

Consumer Price Index

December, 2013

Tirana, on 06 January 2014: Consumer Price Index in December 2013 result 116.2 % considerate December 2007 as base period.

In December 2013 the annual rate of consumer price is 1.9 %. A year before the annual rate was 2.4. Compared to December 2012, prices increased the most in the group "Alcoholic drinks and tobacco" by 4.2 %, followed by "Food and non-alcoholic beverage" group by 3.5 %, "goods and different service" group by 3.3 %, "House" water, fuel and power" group by 2.3 %,etc. On the other hand goods and service prices are lower in the "Communication" group by 2.9 %. Followed by "Health" group by 1.5 %, "Transport" group by 1.2 % etc.

Annual growth rate in December was push up mainly from "Food and non-alcoholic beverage" by 1.4 p.p. In this group prices of vegetables are increased by 23.2 % and price of fruits are increased by 13.2 %. Higher prices of "Alcoholic beverages and tobacco" contributed by 0.2 p.p. in annual rate. Compared with one year before, price of tobacco is increased by 8.0 %. Prices of "Housing, water, fuel and power" group contributed by 0.4 p.p. In this group prices of materials for maintenance of house are increased by 2.6 % and prices of drinking water by 1.8 %.

Low prices of "Clothing and footwear" group contributed by - 0.2 p.p. in annual rate. In this group prices of clothing are decrease by 3.9 % and price of footwear by 2.1 %.

In December monthly rate of consumer price is 1.7 %. Monthly rate of prices was push up mainly by "Food and non-alcoholic beverage" by 1.5 p.p. Prices of vegetables are increased by 26.1 %, eggs by 9.1 %, fruits by 3.6 %, tobacco by 2.3 %. Higher prices of "Housing, water, fuel and power" contributed by 0.1 p.p. in monthly rate. In this group, prices of liquid gas increased by 6.0 % and prices of fire wood by 4.1 %.

On the other hand low prices of "transport" group contributed by - 0.01 p.p. in monthly rate. Prices of diesel are decrease by 0.2 % and prices of petrol by 0.1 %.

Fig. 1 Annual rate of consumer price index

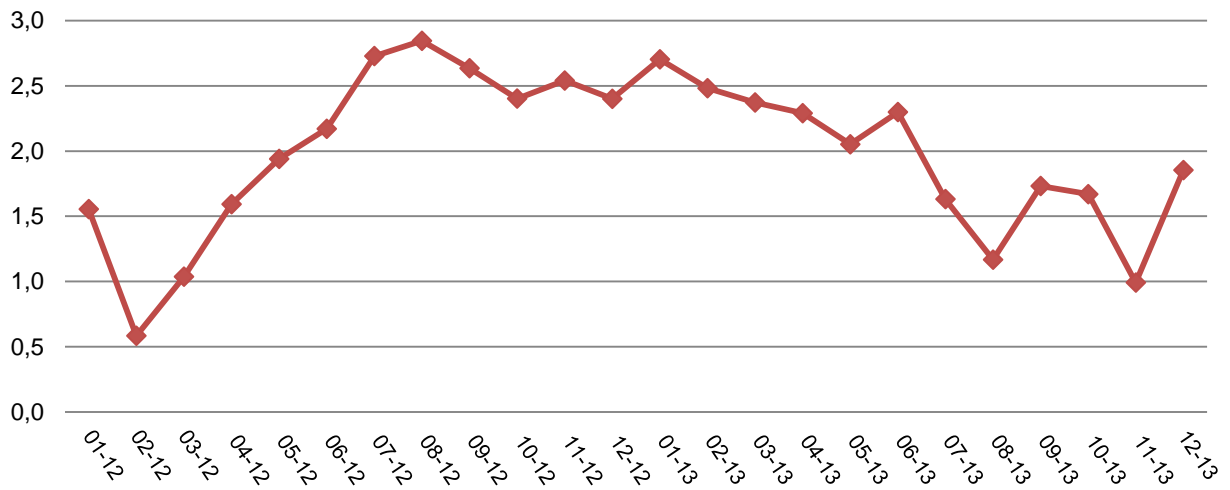
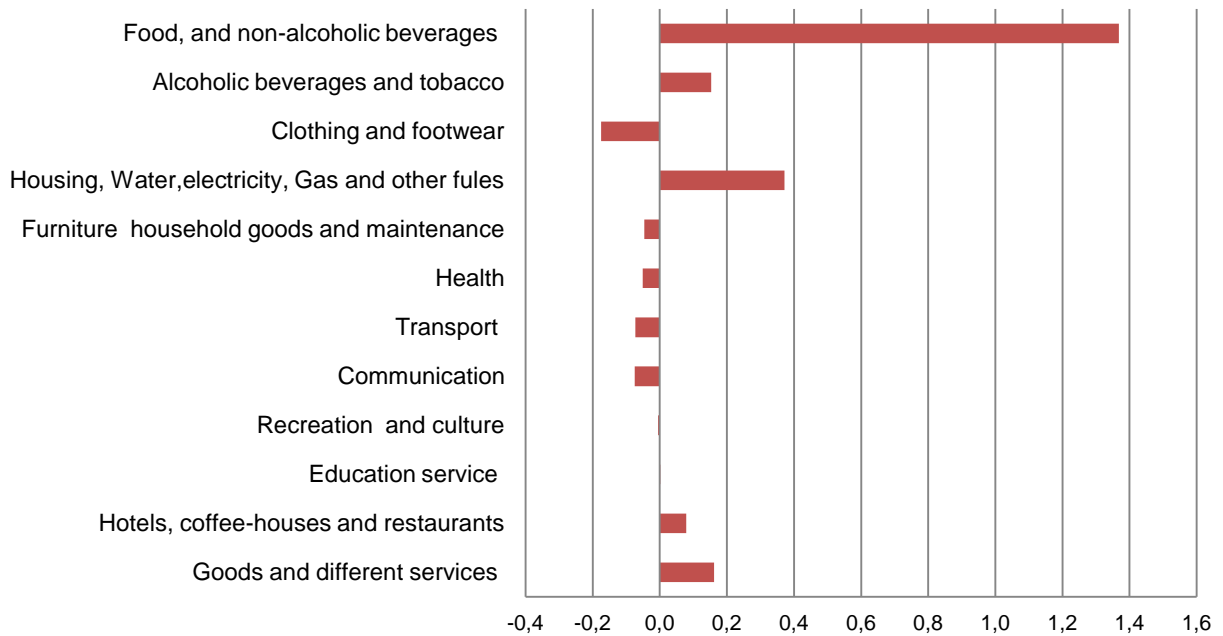


Fig. 2 Contribute of main groups in annual rate



Tab. 1 Consumer Price Index

December 2007=100

%

Code	Groups	Weights	12-12	01-13	02-13	03-13	04-13	05-13	06-13	07-13	08-13	09-13	10-13	11-13	12-13
	Total	100,0	114,1	115,2	116,5	116,8	116,6	115,5	114,8	113,8	113,7	114,6	114,8	114,2	116,2
1	Food, and non-alcoholic beverages	39,3	121,1	123,8	127,0	128,6	128,1	124,9	123,1	121,1	120,7	122,6	122,4	120,7	125,3
2	Alcoholic beverages and tobacco	3,6	128,9	128,8	129,2	129,1	129,0	129,7	129,5	129,5	129,3	129,4	129,8	132,6	134,4
3	Clothing and footwear	5,1	88,6	87,9	87,3	87,1	87,0	86,7	85,6	85,0	84,9	85,1	85,5	85,5	85,6
4	Housing, Water, electricity, Gas and other fuels	16,3	112,6	112,7	112,7	112,6	112,5	112,4	112,9	112,7	112,8	113,9	114,0	114,3	115,2
5	Furniture household goods and maintenance	10,0	103,9	104,0	104,1	104,1	104,2	104,1	104,0	103,9	104,0	103,7	103,4	103,6	103,4
6	Health	3,4	123,6	123,6	123,6	123,6	123,6	123,6	123,4	122,3	121,7	121,9	121,9	121,9	121,7
7	Transport	6,1	119,3	118,7	118,5	118,4	118,9	119,1	118,8	118,7	119,2	118,5	118,3	118,0	117,9
8	Communication	2,6	82,3	82,3	82,3	82,3	82,3	82,2	82,2	82,2	82,2	82,3	79,9	79,9	79,9
9	Recreation and culture	3,1	114,9	114,8	114,6	114,4	114,4	114,4	114,5	114,6	115,0	115,3	115,0	114,8	114,7
10	Education service	1,4	109,0	108,9	108,9	108,9	108,9	108,9	109,3	109,3	109,3	109,1	109,0	109,0	109,0
11	Hotels, coffee-houses and restaurants	4,2	108,8	108,9	109,0	108,9	109,0	109,1	109,5	109,6	110,2	110,8	110,9	110,9	110,9
12	Goods and different services	4,9	108,6	110,5	110,7	105,6	105,6	108,4	107,9	107,1	107,5	107,0	112,2	111,9	112,2

Tab. 2 Monthly rate of CPI

%

Code	Groups	12-12	01-13	02-13	03-13	04-13	05-13	06-13	07-13	08-13	09-13	10-13	11-13	12-13
	Total	0,9	1,0	1,1	0,3	-0,1	-1,0	-0,6	-0,8	-0,1	0,8	0,1	-0,5	1,7
1	Food, and non-alcoholic beverages	2,4	2,2	2,6	1,2	-0,4	-2,5	-1,4	-1,7	-0,4	1,6	-0,1	-1,4	3,8
2	Alcoholic beverages and tobacco	0,3	-0,1	0,3	0,0	-0,1	0,6	-0,2	0,0	-0,2	0,1	0,3	2,2	1,3
3	Clothing and footwear	-0,2	-0,8	-0,6	-0,3	-0,1	-0,4	-1,2	-0,9	-0,2	0,3	0,4	0,0	0,2
4	Housing, Water, electricity, Gas and other fuels	0,0	0,1	0,0	-0,2	0,0	-0,1	0,4	-0,1	0,1	0,9	0,2	0,3	0,8
5	Furniture household goods and maintenance	0,3	0,1	0,1	0,0	0,1	0,0	-0,1	-0,1	0,1	-0,3	-0,2	0,1	-0,1
6	Health	-0,2	0,0	0,0	0,0	0,0	0,0	-0,1	-1,0	-0,4	0,1	0,0	0,0	-0,1
7	Transport	0,1	-0,6	-0,1	-0,1	0,4	0,1	-0,3	-0,1	0,5	-0,6	-0,1	-0,2	-0,1
8	Communication	1,5	0,0	0,0	0,0	0,0	0,0	0,0	0,0	0,1	0,0	-2,9	0,0	0,0
9	Recreation and culture	0,2	-0,1	-0,1	-0,2	0,0	0,1	0,0	0,1	0,3	0,3	-0,3	-0,2	-0,1
10	Education service	0,0	0,0	0,0	0,0	0,0	0,0	0,3	0,0	0,0	-0,2	0,0	0,0	0,0
11	Hotels, coffee-houses and restaurants	0,6	0,1	0,1	0,0	0,1	0,1	0,4	0,0	0,6	0,5	0,1	0,0	0,0
12	Goods and different services	-4,2	1,8	0,1	-4,6	0,0	2,6	-0,4	-0,8	0,4	-0,5	4,9	-0,2	0,2

For more information, visit INSTAT webpage: <http://www.instat.gov.al/>

Tab. 3 Annual rate of CPI

Code	Groups	12-12/12-12	01-13/01-12	02-13/02-12	03-13/03-12	04-13/04-12	05-13/05-12	06-13/06-12	07-13/07-12	08-13/08-12	09-13/09-12	10-13/10-12	11-13/11-12	12-13/12-12	%
	Total	2,4	2,7	2,5	2,4	2,3	2,1	2,3	1,6	1,2	1,7	1,7	1,0	1,9	
1	Food, and non-alcoholic beverages	3,6	4,4	4,9	5,6	5,7	4,9	5,4	4,0	2,8	3,9	3,5	2,1	3,5	
2	Alcoholic beverages and tobacco	3,8	3,8	3,9	3,6	3,5	4,3	4,1	4,1	3,9	2,4	1,2	3,2	4,2	
3	Clothing and footwear	-2,3	-3,1	-3,2	-3,4	-3,4	-3,6	-4,5	-4,4	-3,8	-3,7	-3,8	-3,7	-3,4	
4	Housing, Water, electricity, Gas and other fuels	0,3	0,3	-0,1	-0,5	-0,9	-1,0	-0,5	-0,5	-0,5	1,5	1,6	1,5	2,3	
5	Furniture household goods and maintenance	1,5	1,3	1,4	1,3	1,2	0,7	0,5	0,4	0,5	0,2	-0,1	-0,1	-0,5	
6	Health	1,5	1,4	1,1	1,1	0,1	0,1	-0,1	-1,0	-1,5	-1,4	-1,5	-1,6	-1,5	
7	Transport	3,4	1,5	0,6	-0,7	-0,3	0,5	1,1	0,5	0,3	-0,9	-1,0	-1,0	-1,2	
8	Communication	1,3	1,3	1,3	1,3	1,3	1,3	1,3	1,2	1,3	1,3	-1,4	-1,4	-2,9	
9	Recreation and culture	1,9	1,7	1,5	0,8	0,3	0,4	0,4	0,9	0,8	0,6	0,4	0,1	-0,2	
10	Education service	1,9	1,8	1,8	1,8	1,8	1,8	2,2	2,2	2,2	2,0	0,1	0,1	0,1	
11	Hotels, coffee-houses and restaurants	2,0	1,9	1,9	1,7	1,8	1,5	1,9	2,1	2,7	3,1	3,0	2,5	1,9	
12	Goods and different services	5,7	7,5	1,4	-3,5	-3,6	-1,0	-1,6	-2,4	-2,0	-3,0	1,8	-1,2	3,3	

Methodology

Consumer Price Index (CPI) is calculated with a new basket of product from December 2007. Weights are based on the results of the Household Budget Survey, carried out during October 2006 – September 2007. December 2007 is considered as the base period (December 2007 = 100). Previous change of the product basket was from January 2002, where the number of the products was increased from 221 to 262 products. In the new basket the number of product is 272. The international classification, COICOP, with 12 main groups was introduced to the previous product basket and it will continue to be used with the new product basket. The index will cover all Albanian (rural and urban) territory. The previous index covered only the urban area. The product weights will be different for each region. Prices are collected in main cities of 11 prefectures were Kukës is within the prefecture of Dibër.

The Consumer Price Index of Albania is a Laspeyres type index:

$$I_{0,i}^t = \frac{\sum_i P_i^t * Q_i^0}{\sum_i P_i^0 * Q_i^0}$$

With weights ($w = P*Q$) from base period this is approximated to:

$$I_{0,i}^t = \sum_i w_i * \left(\frac{P_i^t}{P_i^0} \right)$$

In more detail, a price relative is calculated for each item and region with geometrical mean on the sample of outlets:

$$PR_{t-1,ij}^t = \prod_{k=1}^n \left(\frac{P_{ijk}^t}{P_{ijk}^{t-1}} \right)^{1/n}$$

Monthly chaining gives the price relative from the base period:

$$PR_{0,ij}^t = PR_{0,ij}^1 * \dots * PR_{t-1,ij}^t$$

Regional CPI is calculated:

$$RI\check{C}KI_{i,0}^t = \sum_i r_{ij} * PR_{0,ij}^t$$

The price relatives are aggregated geographically to form product indices on items for whole Albania:

$$I_{0,i}^t = \sum_j r_{ij} * PR_{0,ij}^t \quad \text{Where: } \sum_j r_{ij} = 1 \quad : \quad \forall_i \text{ (for all cases)}$$

Aggregation over items then gives the CPI of Albania:

$$CPI_0^t = \sum_i w_i * I_{0,i}^t \quad \text{Where: } \sum_i w_i = 1$$

Acronyms

P	price
PR	price relative
I	index
CPI	Consumer Price Index
t	time period t
t=0	base period
r	geographical weights
w	item weights
j	numbering of regions
i	numbering of items

The annual rate measures the price change between the current month and the same month of the previous year. This measure is responsive to recent changes in price levels but can be influenced by one-off effect in either month

The monthly rate measures the price change between current month and previous month. Although up-to-date it can be affected by seasonal and other effects.

The 12-month average rate compares average Consumer Price Indices ant the latest 12 month to the average of the previous 12 months.