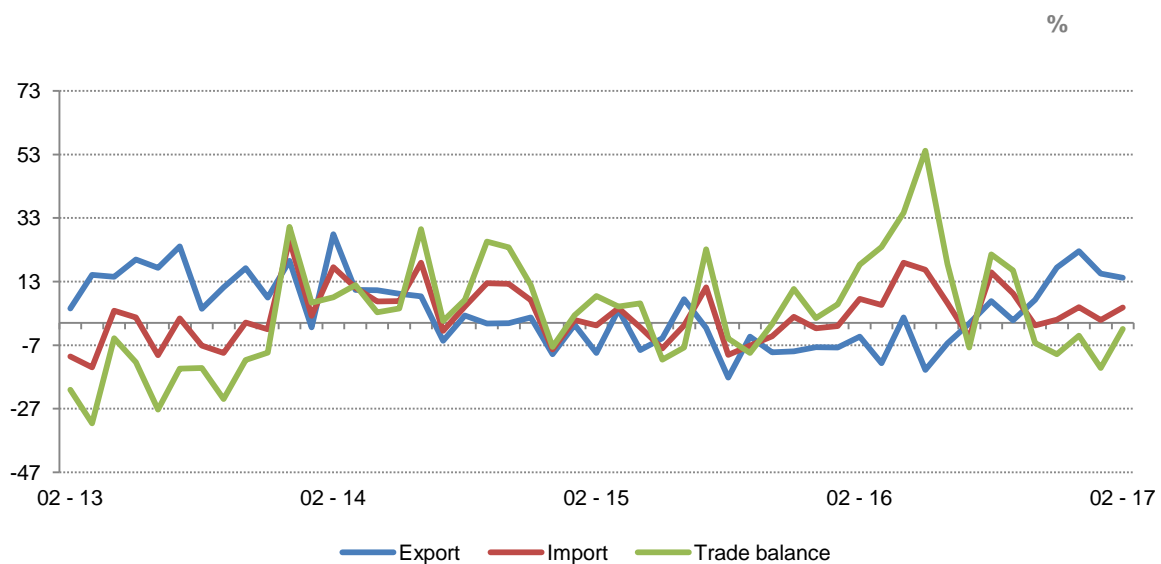


Foreign Trade in Goods

February, 2017

Tirana, March 17, 2017: On February 2017 the value of exports was 20 billion lekë, increasing by 14.2 % compared with the same period of previous year and by 6.2 %, compared with January 2017. The value of imports in February 2017, was 44 billion lekë, increasing by 4.8 % compared with the same period of previous year and by 24.7 % compared with January 2017. This month the trade deficit is 24 billion lekë signing an decrease by 1.9 % compared with February 2016 and an increase by 46.2 % compared with January 2017.

Fig.1 Annual change in external trade, February 2013 – February 2017



In the first two months of 2017, the value of exports was 39 billion lekë, increasing by 14.8 %, compared with previous year and the value of imports was 79 billion lekë, increasing by 3.0 %. Trade deficit was 40 billion lekë, decreasing by 6.3 % compared with the same period of 2016.

The influence of the main groups in the annual change in exports:

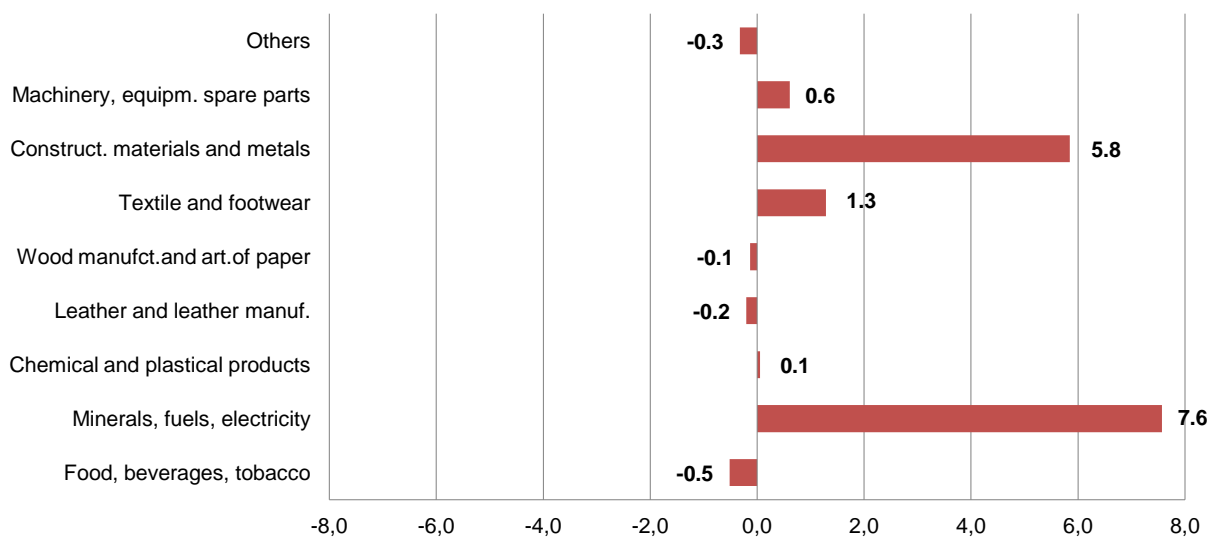
In annual increase of exports by 14.2% this month a positive contribution was given by the groups: "Minerals, fuels, electricity" with +7.6 percentage point, "Construction materials and metals" with +5.8

For release 17/01/2017

Continue

percentage point, "Textile and footwear" with +1.3 percentage point. While a negative contribution was given by the groups: "Food, beverages, tobacco" with -0.5 percentage point, "Leather and leather manufactories" with -0.2 percentage point, "Wood manufacture and article of paper" with -0.1 percentage point.

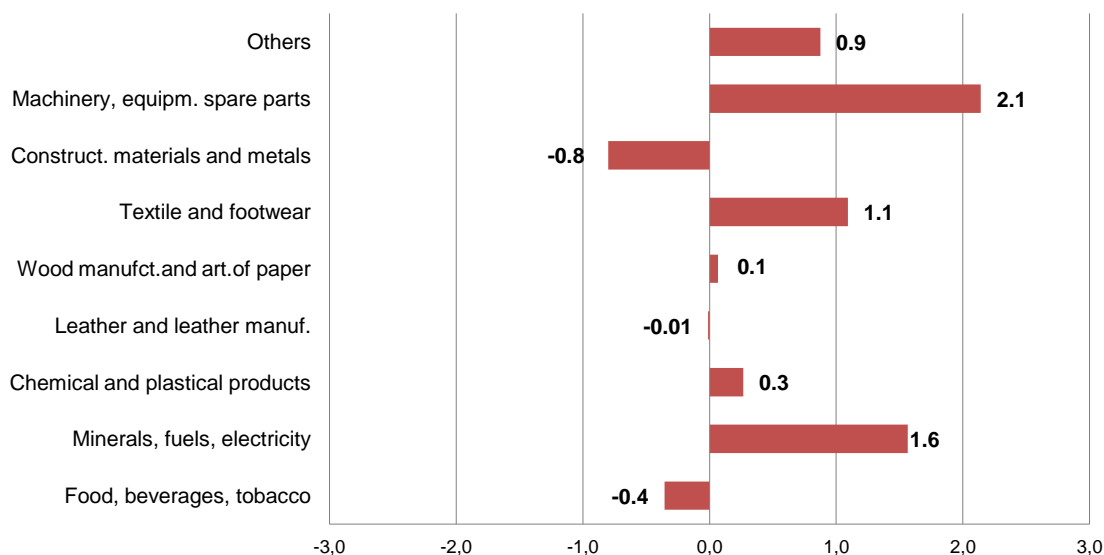
Fig.2 Annual impact of groups in exports, February 2017



In the first two months of 2017, exports are increased by 14.8 % compared with previous year. A positive contribution was given by the groups: "Minerals, fuels, electricity" with +9.4 percentage point, "Construction materials and metals" with +4.1 percentage point, "Textile and footwear" with +2.4 percentage point. While a negative contribution was given by the group: "Food, beverages, tobacco" with -0.8 percentage point, "Leather and leather manufactories" with -0.4 percentage point, "Wood manufacture and article of paper" with -0.1 percentage point.

The influence of the main groups in the annual change in imports:

In annual increase of imports by 4.8 % in February 2017 a positive contribution was given by the groups: "Machinery, equipment, spare parts" with +2.1 percentage point, "Minerals, fuels, electricity" with +1.6 percentage point, "Textile and footwear" with +1.1 percentage point. While a negative contribution was given by the group: "Construction materials and metals" with -0.8 percentage points, "Food, beverages, tobacco" with -0.4 percentage point, "Leather and leather manufactories" with -0.01 percentage point.

Fig.3 Annual impact of groups in imports , February 2017

In the first two months of 2017, imports are increased by 3.0 % compared with previous year. A positive contribution was given by the groups: “Chemical and plastical products” with +2.1 percentage point, “Textile and footwear” with +1.3 percentage point, “Food, beverages, tobacco” with +0.3 percentage point, While a negative contribution was given by the group: “Minerals, fuels, electricity” with -0.6 percentage point, “Construction materials and metals” with -0.6 percentage point, “Wood manufacture and article of paper” with -0.3 percentage point

The performance of trade in goods by partner countries

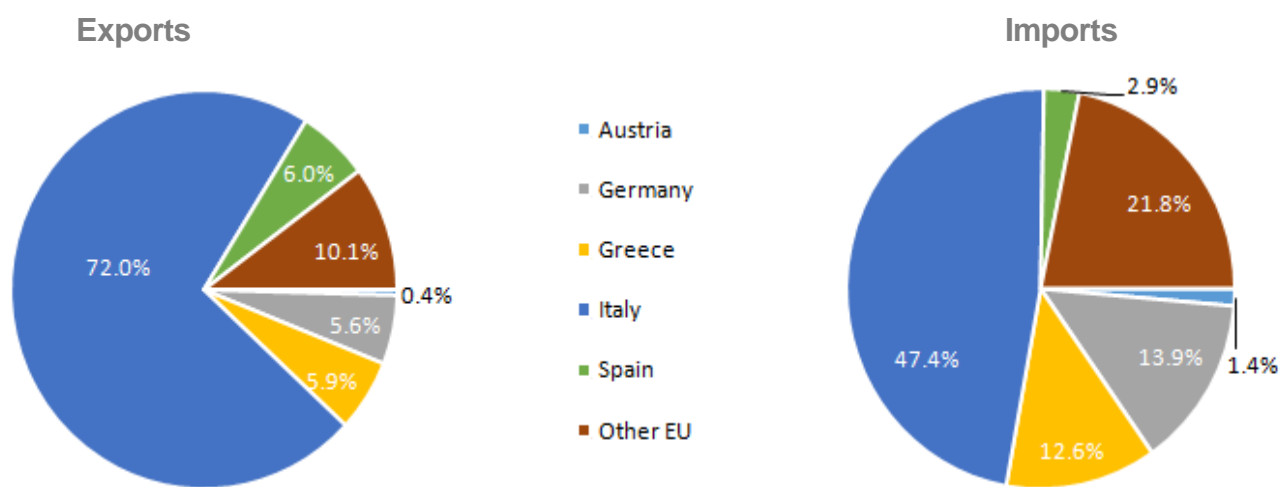
In February 2017, countries with which Albania has had the highest increase of exports, compared to February 2016 are: Italy with (5.3 %), Kosovo with (40.1 %) and Spain with (69.5 %). While, countries with which has had a decrease of exports are: Bulgaria with (-22.4 %), Netherland with (-8.3%) and Austria with (-53.1 %).

In the first two months of 2017, countries with which Albania has had the highest increase of exports, compared to February 2016 are: Italy with (9.1 %), Kosovo with (36.5 %) and Spain with (120.7 %). While, countries with which has had a decrease of exports are: Hungary with (-13.4 %), Netherland with (-4.6 %) and Austria with (-34.6 %).

In February 2017, countries with which Albania has had the highest increase of imports, compared to December 2015 are: Germany with (19.3 %), Turkey with (18.6 %) and Greece with (8.5 %). While, countries with which has had a decrease of imports are: Italy with (-5.7 %), China with (-12.8 %) and Czech republic with (-35.4 %).

In the first two months of 2017, countries with which Albania has had the highest increase of imports, compared to February 2016 are: Italy with (9.1 %), Kosovo with (36.5 %) and Spain with (120.7 %). While, countries with which has had a decrease of exports are: Hungary with (-13.4 %), Netherland with (-4.6 %) and Austria with (-34.6 %).

Fig.4 Foreign Trade in Goods by several EU countries, February 2017



Trade with the EU countries is 66.9 % of total trade. In February 2017, exports to EU countries occupied 78.1 % of total export and imports from EU countries occupied 61.8 % of total import. The main trade partners remain Italy (37.7 %), Germany (7.3 %), Greece (6.8 %) and China (6.6 %).

Trade with the EU countries, in 2016 is 64.0 % of total trade. In the first two months of 2017, exports to EU countries occupied 80.6 % of total export and imports from EU countries occupied 55.8 % of total import. The main trade partners are: Italy (39.0 %), China (7.0 %), Germany (6.7 %) and Greece (6.5 %).

Tab. 1 Flow of goods (billion ALL)

Years	Months	Exports	Annual Change (%)	Imports	Annual Change (%)	Trade Balance	Percentage of cover
2000		37	-23.5	157	-1.5	-120	23.6
2001		44	19.1	190	21.0	-146	23.2
2002		47	7.7	210	10.6	-163	22.6
2003		54	14.7	226	7.4	-171	24.1
2004		62	14.0	236	4.5	-174	26.3
2005		66	6.0	262	11.1	-196	25.1
2006		77	17.6	299	14.1	-222	25.9
2007		97	25.5	376	25.8	-279	25.8
2008		113	15.8	440	16.9	-327	25.6
2009		105	-7.2	429	-2.5	-324	24.4
2010		162	54.6	478	11.4	-316	33.8
2011		197	21.9	544	13.9	-347	36.2
2012		213	8.2	528	-2.9	-315	40.3
2013		246	15.7	517	-2.1	-271	47.6
2014		256	3.8	552	6.7	-297	46.3
2015		243	-4.9	545	-1.4	-301	44.7
2016		243	0.1	579	6.4	-336	42.0
2014	01 - 14	18	-1.4	35	2.2	-17	51.2
	02 - 14	20	27.9	39	17.5	-19	51.8
	January -February 2014	38	12.3	74	9.8	-36	51.5
2015	01 - 15	18	-0.6	35	0.9	-17	50.4
	02 - 15	18	-9.4	39	-0.8	-20	47.3
	January -February 2015	36	-5.3	74	0.03	-38	48.8
2016	01 - 16	16	-7.8	35	-1.0	-18	47.0
	02 - 16	18	-4.4	42	7.6	-24	42.0
	January -February 2016	34	-6.0	77	3.5	-43	44.3
2017	01 - 17	19	15.5	35	0.9	-16	53.8
	02 - 17	20	14.2	44	4.8	-24	45.8
	January -February 2017	39	14.8	79	3.0	-40	49.3

Tab.2 Foreign trade in goods by partner countries (million ALL)

	Exports				Imports			
	Feb-16	Feb-17	Jan-Feb2016	Jan-Feb. 2017	Feb-16	Feb-17	Jan-Feb2016	Jan-Feb. 2017
EU countries	15,137	15,679	27,279	31,435	27,026	27,124	44,554	44,122
Austria	147	69	237	155	639	372	827	642
United Kingdom	29	15	59	53	377	385	587	698
Germany	708	878	1,332	1,613	3,161	3,770	5,376	6,254
Greece	789	920	1,464	1,655	3,147	3,413	5,744	6,006
Italy	10,716	11,282	21,099	23,019	13,632	12,861	24,941	23,083
Spain	551	933	821	1,812	686	797	1,188	1,396
Croatia	41	50	76	91	265	322	519	580
Others of EU	2,157	1,532	2,191	3,037	5,119	5,204	5,373	5,464
China	212	709	575	1,310	4,028	3,513	7,450	6,899
Kosovo	1,033	1,447	1,749	2,389	299	509	525	860
Macedonia	276	608	456	885	426	565	794	906
Russia	1	6	1	6	185	407	889	1,314
USA	92	95	188	244	817	572	1,479	1,423
Turkey	61	172	160	279	2,969	3,522	5,767	6,272
Ukraine	23	42	34	122	221	251	330	540
Switzerland	109	192	181	268	545	755	1,148	1,190
Others	648	1,137	3,346	2,072	5,325	6,651	13,785	15,527
Total	17,592	20,087	33,972	39,010	41,841	43,867	76,720	79,054

Tab. 3 Foreign trade by group of goods (million ALL)

Group of goods	Exports				Imports			
	Feb-16	Feb-17	Jan-Feb2016	Jan-Feb. 2017	Feb-16	Feb-17	Jan-Feb2016	Jan-Feb. 2017
Total	17,592	20,087	33,972	39,010	41,841	43,867	76,720	79,054
Food, beverages, tobacco	1,662	1,571	3,124	2,841	7,158	7,009	13,587	13,827
Minerals, fuels, electricity	2,331	3,663	4,379	7,585	3,481	4,136	8,023	7,528
Chemical and plastical products	290	298	537	543	6,517	6,628	10,446	12,070
Leather and leather manuf.	243	207	518	383	1,164	1,159	2,182	2,255
Wood manufct.and art. of paper	630	606	1,221	1,175	1,669	1,697	2,992	2,760
Textile and footwear	8,889	9,116	17,329	18,137	6,127	6,585	11,002	11,988
Construct. materials and metals	2,111	3,139	4,134	5,511	5,054	4,719	8,807	8,357
Machinery, equipm. spare parts	892	999	1,711	1,879	9,207	10,103	17,262	17,130
Others	544	487	1,019	955	1,466	1,831	2,419	3,139

Tab. 4 Exports of group of goods and main partners (Jan.-Feb. 2016, Jan.-Feb. 2017)
(million ALL)

Group of goods	Italy		Kosovo		Greece		Germany	
	2015	2016	2015	2016	2015	2016	2015	2016
Total	21,099	23,019	1,749	2,389	821	1,812	1,464	1,655
Food, beverages, tobacco	1,422	970	285	244	120	120	284	247
Minerals, fuels, electricity	568	2,276	348	1,040	256	1,342	48	43
Chemical and plastical products	245	208	117	121	-	0	39	67
Leather and leather manuf.	474	300	0	-	-	3	7	8
Wood manufct.and art. of paper	963	886	37	52	1	1	105	119
Textile and footwear	13,890	14,458	10	13	345	273	731	758
Construct. materials and metals	1,842	2,224	691	688	91	72	186	304
Machinery, equipm. spare parts	1,188	1,222	87	76	2	0	19	51
Others	506	473	174	156	6	0	45	58

Tab. 5 Imports of group of goods and main partners (Jan.-Feb. 2016, Jan.-Feb. 2017)
(million ALL)

Group of goods	Italy		Germany		China		Greece	
	2015	2016	2015	2016	2015	2016	2015	2016
Total	24,941	23,083	7,450	6,899	5,767	6,272	5,376	6,254
Food, beverages, tobacco	2,492	2,384	63	121	682	770	591	531
Minerals, fuels, electricity	2,798	2,311	2	1	49	169	97	92
Chemical and plastical products	2,197	2,500	606	767	835	949	793	1,014
Leather and leather manuf.	1,803	1,789	132	96	25	41	1	0
Wood manufct.and art. of paper	1,012	864	146	171	371	331	117	96
Textile and footwear	6,020	6,075	1,241	1,619	1,923	2,060	309	331
Construct. materials and metals	2,494	2,387	2,141	903	699	777	160	164
Machinery, equipm. spare parts	5,440	4,088	2,633	2,504	964	837	3,144	3,837
Others	685	685	486	718	218	339	165	189

DEFINITIONS

Exports are goods destined to a third country, placed under customs export or outward processing arrangements or re-exported following inward processing.

The FOB (free on board) value of exports of goods is the value of the goods at the exporter's customs frontier.

Imports are goods arrived from a third country and are directly placed, or are left in warehouse, under customs procedure of release for free circulation, inward processing or processing under customs control.

The cost, insurance and freight (CIF) price is the price of a good delivered at the frontier of the importing country, or the price of a service delivered to a resident, before the payment of any import duties or other taxes on imports or trade and transport margins within the country.

Combined Nomenclature (CN) is a goods nomenclature used by international trade in goods statistics and for customs tariffs.

Member State of European Union Belgium, Germany, France, Italy, Luxembourg, Netherlands, United Kingdom, Denmark, Ireland, Greece, Spain, Portugal, Austria, Finland, Sweden, Cyprus, Czech Republic, Estonia, Hungary, Latvia, Lithuania, Malta, Poland, Slovakia, Slovenia, Bulgaria, Romania, Croatia.

Explanation of Symbols

0 value less than half of unit of measure

- no value

÷ up to