

Short Term Statistics

First Quarter 2015

Tirana, 29 June: INSTAT publish "Short term statistics of economical enterprise" data of fourth quarter 2014 according the Nomenclature of Economical Activities, NACE Rev. 2, updated base from 2005 to 2010. The questionnaire covers: *"Industry"* (where are included *"Mining and Quarrying"* and *"Manufacturing"*), *"Electricity, gas, steam"*, *"Water supply; sewerage, waste management and remediation activities"*, *"Construction"*, and *"Services"* (included the activity of *Trade, Transport and storage, Hotels, Information and communication, Architectural and engineering activities, Travel agency*) (see: Methodological elucidations pg.19).

In the first quarter 2015, the volume turnover index was 106.1 % against the base year (2010=100).

The annual change of this index presents an increase 2.3 % in the activities covered in the quarterly survey, compared with the first quarter 2014. This change on the same quarter 2014 was increase 3.8 %. This increase was mainly indicated by the activities of *"Travel agency"*, *"Electricity, gas, steam"*, *"Water supply; sewerage, waste management and remediation activities"*, respectably 26.4 %, 21 %, and 12.4 %.

In the activity *"Industry"*, the volume turnover index presents a decrease 9.3 %, indicated mainly by the activity of *"Mining and quarrying"* by 29.7 %.

The positive change of 3.5 % of the volume turnover index in the activity of *"Services"* compared with first quarter 2014 is mainly indicated by the activities: *"Travel agency"*, *"Trade"* and *"Hotels"* respectably 26.4 %, 7.4 % and 6.5 %.

The quarterly change of volume turnover index, in the first quarter 2015, presents a decrease by 17.7 % compared with the previous quarter. This decrease is mainly indicated by *"Transport and Storage"*, *"Construction"* and *"Mining and quarrying"* respectably 48.9 %, 34% and 29.2%.

In the activity of *"Industry"*, the volume turnover index decrease 17.2 %, indicated mainly by the activity *"Mining and quarrying"* with a decrease 29.2 %.

In the activity “Services” compared with the previous quarter, the decrease 16.9 % is mainly indicated by: “Transport and storage” and “Information and Communication” respectively 48.9 % and 24.1 %.

Fig. 1 Indexes of turnover in volume

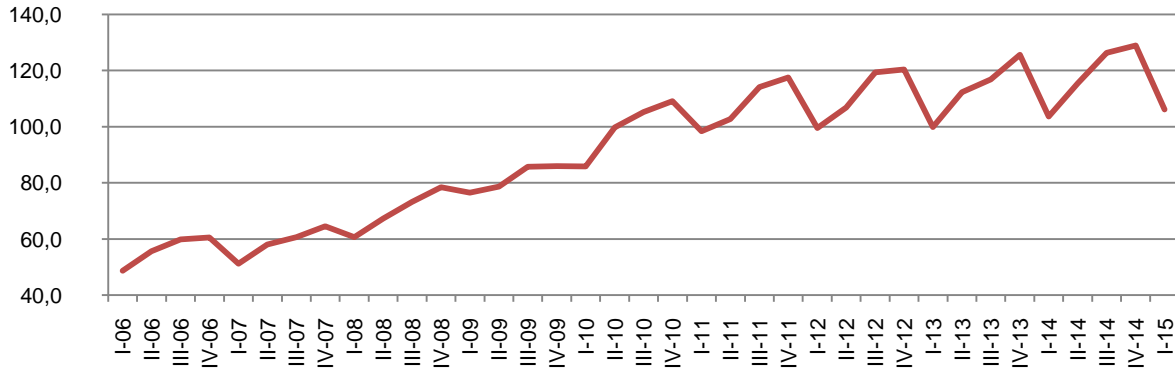
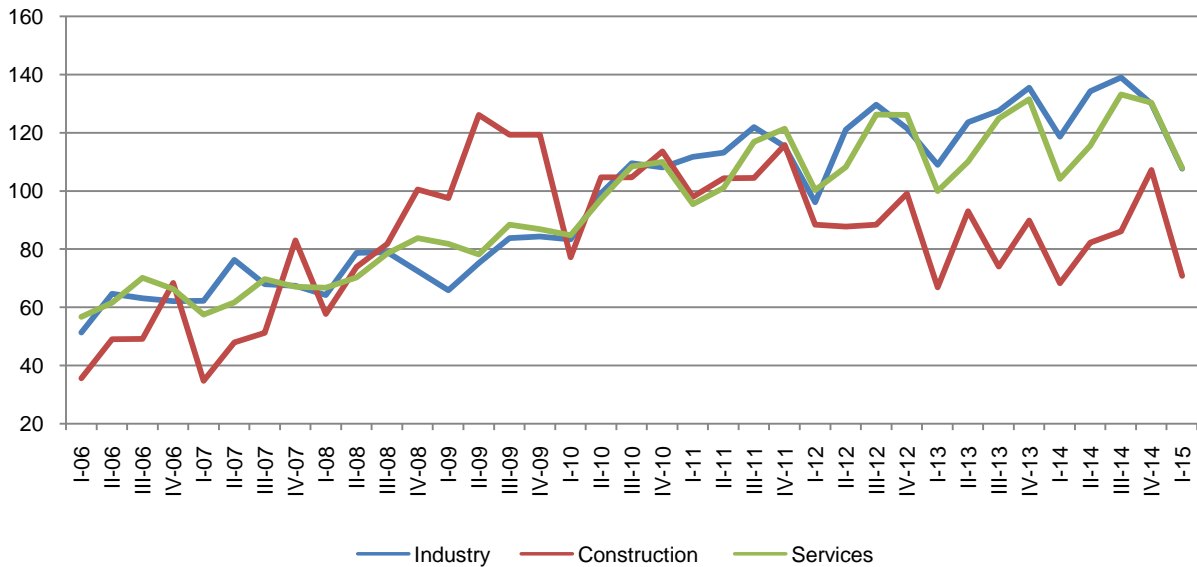


Fig. 2 Indexes of turnover in Industry, Construction and Services



Tab. 1 Annual change of turnover volume index, Total activities

(2010=100)

(%)

Code NACE Rev.2	Description	I - 14 I - 13	II - 14 II - 13	III - 14 III - 13	IV - 14 IV - 13	I - 15 I - 14
Total by economic activities		3.8	2.8	8.2	2.6	2.3
B+C	Industry	8.9	8.6	9.0	-4.0	-9.3
B	Mining and quarrying	22.1	22.9	19.1	-16.2	-29.7
C	Manufacturing Industry	4.6	3.7	5.7	0.8	0.6
D	Electricity, gas, steam	-3.1	3.7	14.4	30.6	21.0
E	Water supply; sewerage, waste management and remediation activities	-4.2	7.7	-5.7	-6.2	12.4
F	Construction	2.1	-11.6	16.2	19.3	3.6
G - N	Services	4.1	4.5	5.4	-1.4	3.5
G	Trade	6.7	6.2	7.8	0.4	7.4
H (49-53)	Transport and storage*	-47.8	-43.3	-44.6	-15.0	-31.8
I (551)	Hotels	-4.7	16.3	24.8	19.8	6.5
J (58-62)	Information and communication	8.8	19.2	11.8	-23.1	-20.4
M (71)	Architectural and engineering activities	16.3	-12.4	14.1	56.2	4.7
N (79)	Travel agency	30.6	37.0	35.5	17.1	26.4

* The weight structure for activities covered in Transport (railway, maritime and air transport), although there are differences as a result of lack of air transport, has not changed because the weights are revised for methodological reasons in t-2 period. Index changes in air transport will be reflected in the first quarter 2016.

Tab. 2 Quarterly change of turnover volume index, Total activities

(2010=100)

(%)

Code NACE Rev.2	Description	I - 14 IV - 13	II - 14 I - 14	III - 14 II - 14	IV - 14 III - 14	I - 15 IV - 14
Total by economic activities		-17.5	11.4	9.4	2.0	-17.7
B+C	Industry	-12.4	13.2	3.6	-6.5	-17.2
B	Mining and quarrying	-15.7	17.4	-2.1	-13.6	-29.2
C	Manufacturing Industry	-11.3	11.5	5.9	-3.8	-11.5
D	Electricity, gas, steam	13.3	0.4	-8.8	25.8	5.0
E	Water supply; sewerage, waste management and remediation activities	-13.1	8.2	-1.1	1.0	4.1
F	Construction	-24.0	20.4	4.7	24.6	-34.0
G - N	Services	-20.8	10.4	14.6	-1.6	-16.9
G	Trade	-20.3	11.7	14.1	-1.2	-14.7
H (49-53)	Transport and storage	-36.4	19.6	21.7	-8.3	-48.9
I (551)	Hotels	-16.6	39.1	15.8	-10.9	-25.8
J (58-62)	Information and communication	-26.6	-1.0	14.7	-7.7	-24.1
M (71)	Architectural and engineering activities	15.1	-16.1	27.3	27.0	-22.8
N (79)	Travel agency	-14.9	19.7	16.6	-1.4	-8.1

Industry, Electricity and Water

The volume turnover in the first quarter 2015 decreased by 9.3 % in “Industry” (where are included “Mining and Quarrying” and “Manufacturing”) compared with the first quarter 2014. In the fallen of “Industry” the main impact is given by “Mining and quarrying Industry” with 29.7 %.

Referred the same comparable period in the section “Electricity, gas, steam” the volume turnover increased by 21 % while in the section “Water supply; sewerage, waste management and remediation activities” this indicator increased by 12.4 %.

Quarterly change of the volume turnover presents a decrease by 17.2 % in “Industry” compared with the fourth quarter 2014. The main impact is given by “Mining and quarrying” with 29.2 %.

The volume turnover indicator increased by 5 % in “Water supply; sewerage, waste management and remediation activities” and “Electricity, gas, steam” increased by 4.1 %.

The industrial production volume in the first quarter 2015 presents a decrease by 22.4 % in the activities covered by “Industry” sector compared with the same quarter of previous year. The main impact is given by the activity “Mining and quarrying” with a decrease by 26.9 %.

While the production volume of “Electricity, gas, steam” and “Water supply; sewerage, waste management and remediation activities” increased by 37.4 % and 37.2 % referred the same comparable period.

The industrial production volume in the first quarter 2015 presents a decrease by 15.4 % in the activities covered by “Industry” compared with the previous quarter. The main impact was given by activity “Mining and quarrying” with 16.5 %.

The industrial production volume during the first quarter 2015 is increased in “Electricity, gas, steam” by 32.4 % and “Water supply; sewerage, waste management and remediation activities” by 3.4 %, compared with the fourth quarter 2014.

The number of employees in “Industry” sector (where are included “Mining and Quarrying” and “Manufacturing”) increased by 6.3 % from first quarter 2015 to first quarter 2014.

Activities as “Water supply; sewerage, waste management and remediation activities” and “Electricity, gas, steam”, this indicator indicates an increase, respectable by 13.9 % and 6.5 %.

The number of employees in “Industry” sector increased by 3.4 %, compared with the previous quarter where the “Manufacturing” has the main impact by 4.5 %.

The number of employees in “Water supply; sewerage, waste management and remediation activities” increased by 15.7 % and in section “Electricity, gas, steam” this indicator presents increased by 5.1 %.

“Wages” level is indicated by an increase by 8.4 % in “Industry”, compared with the same quarter of the previous year, mainly indicated from “Manufacturing” by 10.5 %.

In “Water supply; sewerage, waste management and remediation activities”, for the same comparable period, wages increased by 6.8 %, while in the “Electricity, gas, steam” increased 1.1 %.

“Wages” level is indicated by an increase in “Industry” by 1.9 % compared with the fourth quarter 2014, mainly this increase is from “Manufacturing” by 4.7 %.

In the “Water supply; sewerage, waste management and remediation activities” wages increased by 5.3 %, while in the “Electricity, gas, steam” this indicator presents an increase by 4.8 %.

Fig. 3 Indexes of turnover volume and production in Mining and quarrying and Manufacturing Industry

(2010=100)

(%)

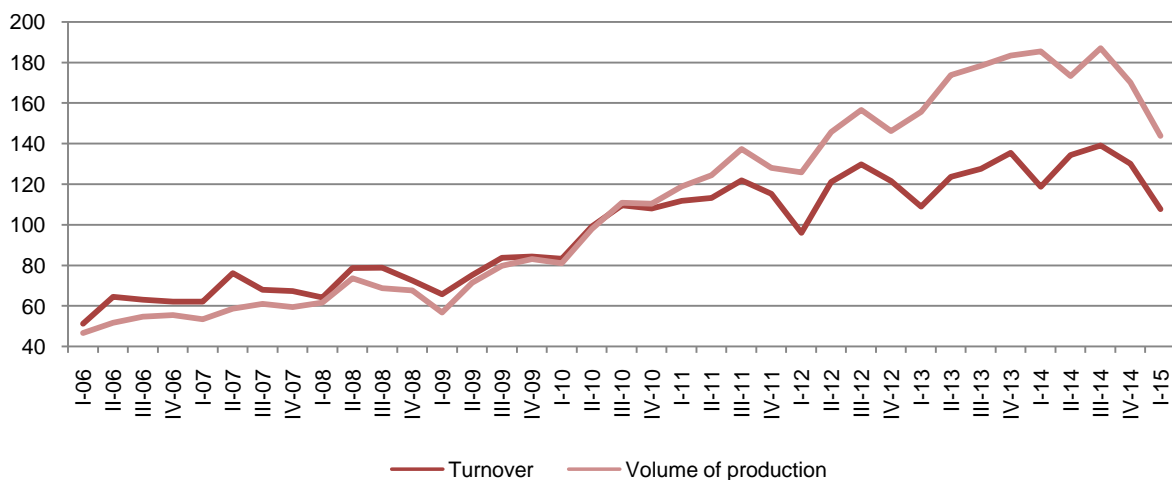


Fig. 4 Indexes of turnover volume in Mining and Quarrying; Manufacturing; Electricity, gas and steam; Water supply

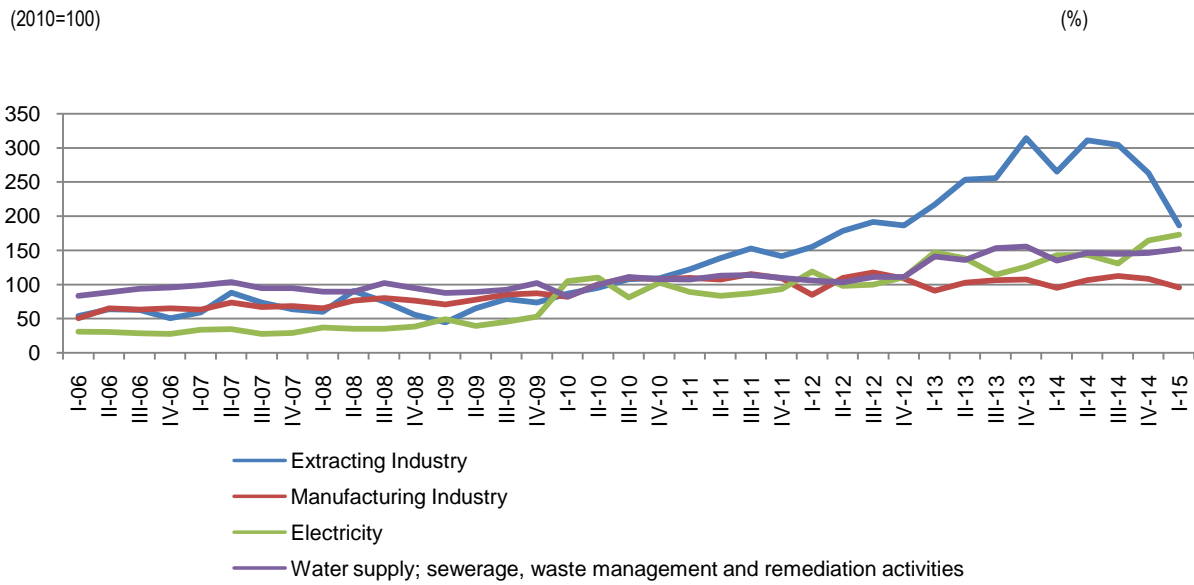
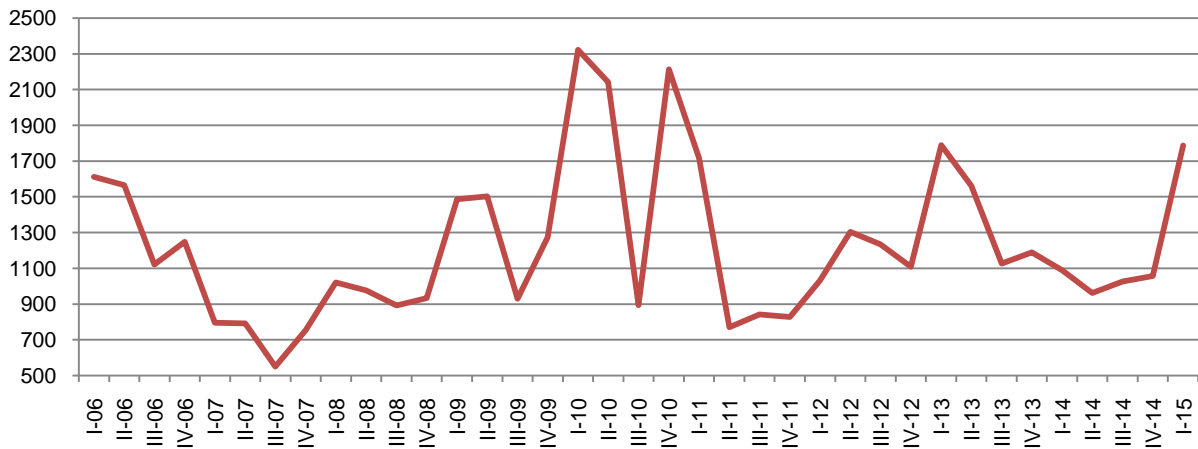


Fig. 5 Production of Electricity (000/kw-hours)



Tab. 3 Annual change of the turnover volume index in Industry, Electricity and Water

(2010=100)

(%)

Section	NACE Rev.2	Economic activity	I - 14	II - 14	III - 14	IV - 14	I - 15
			I - 13	II - 13	III - 13	IV - 13	I - 14
B-C	05-33	Industry	8.9	8.6	9.0	-4.0	-9.3
B	05-09	<i>Mining and quarrying</i>	22.1	22.9	19.1	-16.2	-29.7
C	10-33	<i>Manufacturing Industry</i>	4.6	3.7	5.7	0.8	0.6
D	35	<i>Electricity, gas, steam</i>	-3.1	3.7	14.4	30.6	21.0
E	36-39	<i>Water supply; sewerage, waste management and remediation activities</i>	-4.2	7.7	-5.7	-6.2	12.4

Tab. 4 Quarterly change of the turnover volume index in Industry, Electricity and Water

(2010=100)

(%)

Section	NACE Rev.2	Economic activity	I - 14	II - 14	III - 14	IV - 14	I - 15
			IV - 13	I - 14	II - 14	III - 14	IV - 14
B-C	05-33	Industry	-12,4	13,2	3,6	-6,5	-17,2
B	05-09	<i>Mining and quarrying</i>	-15,7	17,4	-2,1	-13,6	-29,2
C	10-33	<i>Manufacturing Industry</i>	-11,3	11,5	5,9	-3,8	-11,5
D	35	<i>Electricity, gas, steam</i>	13,3	0,4	-8,8	25,8	5,0
E	36-39	<i>Water supply; sewerage, waste management and remediation activities</i>	-13,1	8,2	-1,1	1,0	4,1

Tab. 5 Annual change of the industrial production index Industry, Electricity and Water

(2010=100)

(%)

Section	NACE Rev.2	Economic activity	I - 14	II - 14	III - 14	IV - 14	I - 15
			I - 13	II - 13	III - 13	IV - 13	I - 14
B-C	05-33	Industry	19.1	-0.2	4.8	-7.2	-22.4
B	05-09	<i>Mining and quarrying</i>	17.6	-1.2	8.2	-21.9	-26.9
C	10-33	<i>Manufacturing Industry</i>	18.9	-0.1	1.3	10.2	-17.8
D	35	<i>Electricity, gas, steam</i>	-18.0	-28.9	8.7	19.0	37.4
E	36-39	<i>Water supply; sewerage, waste management and remediation activities</i>	-6.7	19.5	-11.4	2.2	37.2

Tab. 6 Quarterly change of the industrial production index Industry, Electricity and Water

(2010=100)

(%)

Section	NACE Rev.2	Economic activity	I - 14	II - 14	III - 14	IV - 14	I - 15
			IV - 13	I - 14	II - 14	III - 14	IV - 14
B-C	05-33	Industry	1.1	-6.5	7.9	-9.0	-15.4
B	05-09	<i>Mining and quarrying</i>	-10.9	-4.6	12.7	-18.6	-16.5
C	10-33	<i>Manufacturing Industry</i>	15.9	-8.1	4.0	-0.5	-13.6
D	35	<i>Electricity, gas, steam</i>	14.7	24.6	-44.0	48.6	32.4
E	36-39	<i>Water supply; sewerage, waste management and remediation activities</i>	-23.0	30.8	1.1	0.4	3.4

Tab. 7 Annual change of the number of employees index in Industry, Electricity and Water

(2010=100)

(%)

Section	NACE Rev.2	Economic activity	I - 14	II - 14	III - 14	IV - 14	I - 15
			I - 13	II - 13	III - 13	IV - 13	I - 14
B-C	05-33	Industry	15.8	21.4	20.7	16.7	6.3
B	05-09	<i>Mining and quarrying</i>	2.9	-0.6	10.1	12.8	5.7
C	10-33	<i>Manufacturing Industry</i>	17.9	25.4	22.6	17.3	6.5
D	35	<i>Electricity, gas, steam</i>	10.6	8.8	6.4	9.3	6.5
E	36-39	<i>Water supply; sewerage, waste management and remediation activities</i>	1.9	5.8	1.6	-2.2	13.9

Tab. 8 Quarterly change of the number of employees index in Industry, Electricity and Water

(2010=100)

(%)

Section	NACE Rev.2	Economic activity	I - 14	II - 14	III - 14	IV - 14	I - 15
			IV - 13	I - 14	II - 14	III - 14	IV - 14
B-C	05-33	Industry	13.5	2.9	0.4	-0.5	3.4
B	05-09	<i>Mining and quarrying</i>	3.1	0.4	9.4	-0.4	-3.4
C	10-33	<i>Manufacturing Industry</i>	15.1	3.3	-0.9	-0.5	4.5
D	35	<i>Electricity, gas, steam</i>	7.9	0.6	-1.1	1.8	5.1
E	36-39	<i>Water supply; sewerage, waste management and remediation activities</i>	-0.6	2.0	-0.8	-2.7	15.7

Tab. 9 Annual change of the wage index in Industry, Electricity and Water

(2010=100)

(%)

Section	NACE		Economic activity	I - 14	II - 14	III - 14	IV - 14	I - 15
	Rev.2			I - 13	II - 13	III - 13	IV - 13	I - 14
B-C	05-33	Industry		21.8	22.3	19.8	13.1	8.4
B	05-09	<i>Mining and quarrying</i>		29.6	20.4	21.1	9.3	4.3
C	10-33	<i>Manufacturing Industry</i>		17.6	22.9	19.1	15.9	10.5
D	35	<i>Electricity, gas, steam</i>		23.8	24.3	13.1	14.9	1.1
E	36-39	<i>Water supply; sewerage, waste management and remediation activities</i>		-5.8	5.9	7.9	-8.8	6.8

Tab. 10 Quarterly change of the wage index in Industry, Electricity and Water

(2010=100)

(%)

Section	NACE		Economic activity	I - 14	II - 14	III - 14	IV - 14	I - 15
	Rev.2			IV - 13	I - 14	II - 14	III - 14	IV - 14
B-C	05-33	Industry		6.3	1.8	2.0	2.5	1.9
B	05-09	<i>Mining and quarrying</i>		1.0	-2.7	7.5	3.5	-3.6
C	10-33	<i>Manufacturing Industry</i>		9.9	4.0	-0.5	2.0	4.7
D	35	<i>Electricity, gas, steam</i>		8.1	6.1	-2.9	3.1	-4.8
E	36-39	<i>Water supply; sewerage, waste management and remediation activities</i>		-10.2	10.2	-6.4	-1.6	5.3

Construction

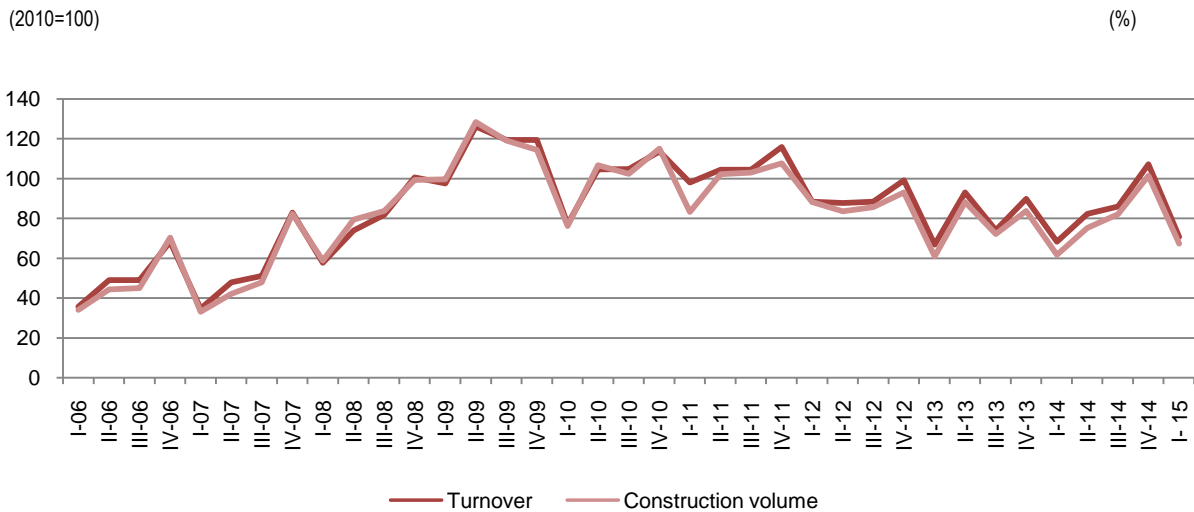
Turnover volume index, in the Construction activity, in the first quarter 2015 increased by 3.6 % compared with the first quarter 2014, and Construction volume index increased by 9.1 %.

The number of employees in “Construction” activity in the first quarter 2015 increased by 9.7 % compared with the first quarter 2014 and the wages increased by 11.3 % during the same period.

In the first quarter 2015, turnover volume index decreased by 34 % compared with the fourth quarter 2014 and the construction volume index decreased by 33.6 % during the same period.

The number of employees in “Construction” activity in the first quarter 2015 increased by 0.6 % compared with the fourth quarter 2014 while the wages decreased by 0.6 % during the same period.

Fig. 6 Turnover volume and Construction volume indexes



Tab. 11 Annual changes of the construction indicators index

(2010=100)

(%)

NACE Rev.2	Indicators	I - 14	II - 14	III - 14	IV - 14	I - 15
		I - 13	II - 13	III - 13	IV - 13	I - 14
41-43	Turnover volume	2.1	-11.6	16.2	19.3	3.6
	Construction volume	1.3	-14.7	13.8	21.1	9.1
	Number of employees	8.5	15.6	20.7	24.7	9.7
	Wages	0.5	9.7	3.8	16.3	11.3

Tab. 12 Quarterly changes of the construction indicators index

(2010=100)

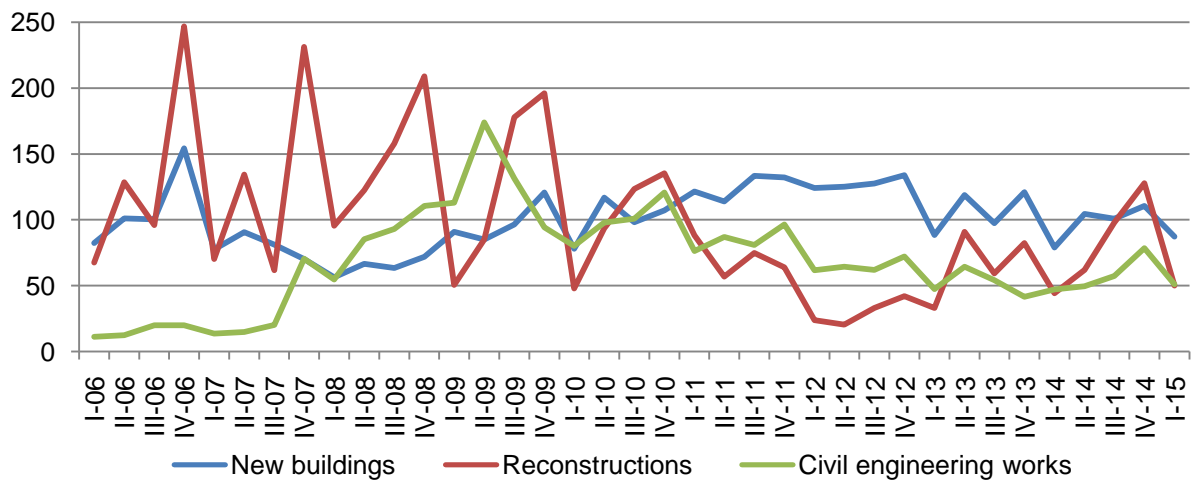
(%)

NACE Rev.2	Indicators	I - 14	II - 14	III - 14	IV - 14	I - 15
		IV - 13	I - 14	II - 14	III - 14	IV - 14
41-43	Turnover volume	-24.0	20.4	4.7	24.6	-34.0
	Construction volume	-26.3	22.0	9.2	23.5	-33.6
	Number of employees	14.5	0.3	4.9	3.6	0.6
	Wages	3.8	1.0	3.4	7.2	-0.6

Fig. 7 Construction volume indexes of New Buildings, Reconstruction and Civil Engineering Works

(2010=100)

(%)



Services

In the first quarter 2015, the volume turnover index in activities of “Services” increased by 3.5 % compared with the first quarter 2014. This decrease is mainly indicated from the activities of: “Travel Agency”, “Trade” and “Hotels” respectively by 26.4 %, 7.4 % and 6.5 %.

In the first quarter 2015, the volume turnover index in activities of “Services” decreased by 16.9 % compared with the previous quarter. This decrease is mainly indicated from: “Transport and storage” by 48.9 %, “Information and Communication” by 24.1 % and “Architectural and engineering activities” by 22.8 %.

In the first quarter 2015, the number of employees’ index in the “Services” activities increased by 14.1 % compared with the same period of previous year. Main impact is from “Wholesale trade” by 23.4 %, “Wholesale and retail sale and repair of motor vehicles” by 19 % and “Hotels” by 9.8 %.

In the first quarter 2015, the number of employees’ index in the “Services” activity increased by 10.8 % compared with the fourth quarter 2014. Main impact is from the activity “Wholesale trade” by 17 %, “Wholesale, retail sale and repair of motor vehicles” by 14.3 %. While the activity “Transport and Storage” presents a decrease in this indicator by 3.8 %.

In the “Services” activity in first quarter 2015, the wage index increased with 9 % compared with the same period of the previous year. Main impact is from “Wholesale trade” by 19.6 %, “Architectural and engineering activities” by 13.3 % and “Hotels” by 9.3 %.

In the first quarter 2015 in the “Services” activity, the wage index represents an increase by 6.1 % compared with the fourth quarter 2014. Main impact is from “Architectural and engineering activities” by 14.9 % and “Wholesale trade” by 13.4%.

Wholesale and retail sale and repair of motor vehicles and Wholesale

In the first quarter 2015, in activity “Wholesale and retail sale and repair of motor vehicles” and “Wholesale” the volume turnover index increased respectively by 9.2 % and 8.2 %.

Quarterly change, in the activity “Wholesale” and “Wholesale and retail sale and repair of motor vehicles”, the volume turnover index presents a decrease respectively by 16.1 % and 4.7 % compared with the fourth quarter 2014.

In the first quarter 2015, in activity “Wholesale”, the annual change of index of the number of employees increased by 23.4 % compared with the first quarter 2014.

Compared with the fourth quarter 2014, this indicator presents an increase by 17 %.

In the activity “Wholesale” in the first quarter 2015, the wage index increased by 19.6 % compared with the same period of previous year, while “Wholesale and retail sale and repair of motor vehicles” increased by 9.6 %.

In quarterly change, wages in “Wholesale” activity increased by 13.4 % compared with the fourth quarter 2014, while “Wholesale and retail sale and repair of motor vehicles” increased by 6.8 %.

Transport and Storage (included the “Post” activity)

In the activity “Transport and Storage”, included “Post” activity, the volume turnover index decreased by 31.8 % in the first quarter 2015 compared with the first quarter 2014. The quarterly change of volume turnover index in the “Post” activity is increased by 12.7 %.

Quarterly change of the volume turnover index, in activity of the “Transport and Storage”, included “Post” activity decreased by 48.9 %. In the “Post” activity quarterly change presents a decrease by 3.5 % of the volume turnover index compared with fourth quarter 2014.

In the first quarter 2015, in activity “Transport and Storage” included “Post” activity; the annual change of number of employees’ index presents a decrease by 2.4 % compared with the first quarter 2014.

The number of employees index in activity “Transport and Storage” included” Post” activity presents a decrease by 3.8 % compared with the fourth quarter 2014.

The annual change of wage index presents a decrease by 18.7 %.

The quarterly change of wage index is decreased by 18.8 % in “Transport and Storage”.

Hotels

In section “Hotels” activity, the volume turnover index increased by 6.5 % in the first quarter 2015 compared with the first quarter 2014.

The quarterly change of the volume turnover index represents a decrease by 25.8 % in “Hotels” activity compared with the fourth quarter 2014.

In the first quarter 2015, in “Hotels” activity, annual change of the index of number employees represents an increase by 9.8 %. Quarterly change of the number index of employees represents a decrease by 2.3 %.

In the first quarter 2015, in “Hotels” activity, the wages index represents an increase by 9.3 % compared with the first quarter 2014 and the wage index represents a decrease by 3 % compared with the fourth quarter 2014.

Information and Communication

In the “Information and communication” activity, the volume turnover index, decreased by 20.4 % in the first quarter 2015 compared with first quarter 2014.

The quarterly change of the volume turnover index in “Information and communication” activity represents a decrease by 24.1 % compared with the previous quarter.

In the first quarter 2015, in “Information and communication” activity, annual changes of index the number of employees represent an increase by 4.3 %.

In the first quarter 2015, in “Information and communication” activity quarterly change of the number of employees’ index represent an increase by 6.4 %.

In the first quarter 2015, in the “Information and communication” activity, annual change of the wage index increased by 4.4 % compared with the first quarter 2014 and the wage index represents a increased by 1.9 % compared with the fourth quarter 2014.

Architectural and Engineering activities

In the section “Architectural and engineering” activity the volume turnover index increased by 4.7 % in the first quarter 2015 compared with first quarter 2014.

The quarterly change of the volume turnover index represents a decrease by 22.8 % compared with the previous quarter.

In the first quarter 2015, in “Architectural and Engineering” activity, annual change of the number of employees index increased by 3.7 % and quarterly change of the number of employees index increased by 0.3 %.

Annual change of the wage index represents an increase by 13.3 % compared with the first quarter 2014.

In the enterprises of this activity, the wage index increased by 14.9 % compared with the fourth quarter 2014.

Travel Agency

In the section "Travel agency" activity, the volume turnover index increased by 26.4 % in the first quarter 2015 compared with the fourth quarter 2014.

The quarterly change of the volume turnover index represents a decrease by 8.1 % compared with the previous quarter.

In the first quarter 2015, in "Travel agency" activity, annual change of the number of employees index represents an increased by 1.7 % compared with the first quarter 2014. The number of employees index represents an increased by 2.4 % compared with previous quarter.

The wage index represents an increase by 7.8 % compared with the first quarter 2014 and a decrease by 2.3 % compared with previous quarter.

Tab. 13 Annual change of the turnover volume index in Services

(2010=100)

(%)

Code NACE Rev.2	Economic activity description	I - 14	II - 14	III - 14	IV - 14	I - 15
		I - 13	II - 13	III - 13	IV - 13	I - 14
G-N	Services	4.1	4.5	5.4	-1.4	3.5
G(45)	Wholesale and retail sale of motorvehicles and repair of motorvehicles	-2.7	0.0	8.3	10.5	9.2
G(46)	Wholesale trade	7.1	6.5	8.0	-0.8	8.2
H(49-53)	Transport and storage	-47.8	-43.3	-44.6	-15.0	-31.8
I(5500)	Hotels	-4.7	16.3	24.8	19.8	6.5
J(58, 61, 62)	Information and communication	8.8	19.2	11.8	-23.1	-20.4
M(71)	Architectural and engineering activities	16.3	-12.4	14.1	56.2	4.7
N(79)	Travel agency	30.6	37.0	35.5	17.1	26.4

Tab. 14 Quarterly change of the turnover volume index in Services

(2010=100)

(%)

Code NACE Rev.2	Economic activity description	I - 14	II - 14	III - 14	IV - 14	I - 15
		IV - 13	I - 14	II - 14	III - 14	IV - 14
G-N	Services	-20.8	10.4	14.6	-1.6	-16.9
G(45)	Wholesale and retail sale of motorvehicles and repair of motorvehicles	-3.6	5.7	9.0	-0.5	-4.7
G(46)	Wholesale trade	-23.1	13.5	16.2	-2.2	-16.1
H(49-53)	Transport and storage	-36.4	19.6	21.7	-8.3	-48.9
I(5500)	Hotels	-16.6	39.1	15.8	-10.9	-25.8
J(58, 61, 62)	Information and communication	-26.6	-1.0	14.7	-7.7	-24.1
M(71)	Architectural and engineering activities	15.1	-16.1	27.3	27.0	-22.8
N(79)	Travel agency	-14.9	19.7	16.6	-1.4	-8.1

Tab. 15 Annual change of the employees number index in Services

(2010=100)

(%)

Code NACE Rev.2	Economic activity description	I - 14	II - 14	III - 14	IV - 14	I - 15
		I - 13	II - 13	III - 13	IV - 13	I - 14
G-N	Services	7.6	18.1	15.2	12.8	14.1
G(45)	Wholesale and retail sale of motorvehicles and repair of motorvehicles	9.8	17.4	3.9	10.5	19.0
G(46)	Wholesale trade	9.5	12.8	17.6	15.1	23.4
H(49-53)	Transport and storage	-4.8	-4.3	-2.9	4.6	-2.4
I(5500)	Hotels	6.6	20.9	22.0	26.5	9.8
J(58, 61, 62)	Information and communication	-12.1	13.0	19.8	4.4	4.3
M(71)	Architectural and engineering activities	22.7	37.7	21.6	3.8	3.7
N(79)	Travel agency	0.7	2.7	-1.5	1.2	1.7

Tab. 16 Quarterly change of the employees number index in Services

(2010=100)

(%)

Code NACE Rev.2	Economic activity description	I - 14	II - 14	III - 14	IV - 14	I - 15
		IV - 13	I - 14	II - 14	III - 14	IV - 14
G-N	Services	9.5	6.2	-3.4	0.4	10.8
G(45)	Wholesale and retail sale of motorvehicles and repair of motorvehicles	6.2	9.9	-11.8	7.3	14.3
G(46)	Wholesale trade	9.1	1.2	4.1	0.1	17.0
H(49-53)	Transport and storage	3.1	0.3	1.2	0.0	-3.8
I(5500)	Hotels	12.5	7.4	12.1	-6.6	-2.3
J(58, 61, 62)	Information and communication	6.5	3.0	-0.5	-4.4	6.4
M(71)	Architectural and engineering activities	0.4	5.1	-10.0	9.2	0.3
N(79)	Travel agency	1.9	-3.5	2.0	0.9	2.4

Tab. 17 Annual change of the wage index in Services

(2010=100)

(%)

Code NACE Rev.2	Economic activity description	I - 14	II - 14	III - 14	IV - 14	I - 15
		I - 13	II - 13	III - 13	IV - 13	I - 14
G-N	Services	3.2	11.0	9.1	6.3	9.0
G(45)	Wholesale and retail sale of motorvehicles and repair of motorvehicles	5.3	7.9	-2.7	-1.2	9.6
G(46)	Wholesale trade	4.2	14.9	18.0	16.7	19.6
H(49-53)	Transport and storage	-21.2	-13.7	-23.4	-4.8	-18.7
I(5500)	Hotels	8.0	16.7	20.6	23.4	9.3
J(58, 61, 62)	Information and communication	12.0	17.7	23.7	12.3	4.4
M(71)	Architectural and engineering activities	6.8	14.7	13.7	-9.6	13.3
N(79)	Travel agency	-11.3	-10.1	-10.0	-5.7	7.8

Tab. 18 Quarterly change of the wage index in Services

(2010=100)

(%)

Code NACE Rev.2	Economic activity description	I - 14	II - 14	III - 14	IV - 14	I - 15
		IV - 13	I - 14	II - 14	III - 14	IV - 14
G-N	Services	5.8	3.0	-4.1	4.0	6.1
G(45)	Wholesale and retail sale of motorvehicles and repair of motorvehicles	-3.7	6.1	-8.1	5.3	6.8
G(46)	Wholesale trade	10.6	5.3	0.6	-0.4	13.4
H(49-53)	Transport and storage	-4.9	4.2	-5.3	1.4	-18.8
I(5500)	Hotels	9.5	5.6	12.9	-5.5	-3.0
J(58. 61. 62)	Information and communication	9.7	-6.5	-6.3	16.9	1.9
M(71)	Architectural and engineering activities	-8.3	-5.3	0.2	3.9	14.9
N(79)	Travel agency	-14.5	-0.2	2.0	8.4	-2.3

Methodological elucidations

General information

INSTAT, in the wake of its efforts to standardizing and approaching the Albanian statistics to the Eurostat and the standards of EU statistics, publicise the economical indicators such as The volume turnover, Production volume, The number of employees and Wages for these activities: Industry (where are included Mining and Quarrying and Manufacturing); Electricity, gas, steam; Treatment and water supply; Construction and Services (where is included the Trade; Transport and storage; Hotels; Information and communication; Architectural and engineering activities, Travel agency)

In the Trade, the survey covers the activity of the Retail Trade and Wholesale, and the Total sale of motorvehicles and repair of motorvehicles. The indicators of Retail Trade are publicised separately from this publication. For further information, please continue the link as follows:

<http://www.instat.gov.al/en/themes.aspx>

The methodological changes are refereed to:

- The application of the revised nomenclature of economic activities, NACE Rev. 2;
- The re-weighting process; using weights of SBS 2010 from year 2005 – 2014. The weights for year 2015 are updated using weights of SBS 2013 (t-2) chain-link method regarding Eurostat recommendations and Swedish assistance.
- The re-referencing process, i.e. the periods of reference are updated from 2005=100 to 2010=100.

The application of the Nomenclature of economic activities NACE Rev. 2 is based on the legal act approved through the Decree of the Council of Ministers N° 320, date 20. 05. 2014.

For more information, see http://www.instat.gov.al/media/248316/njoftim_per_media_-_ndryshimi_i_nomenklatur_s_s_veprintarive_ekonomike_rev_2.pdf

The revised classification differs considerably from the existing classification in terms of structure, classification and methodological treatment of certain activities.

The process of passing of statistical units from NACE Rev. 1.1 to NACE Rev. 2 is performed through the construction of a converted matrix, based on the statistical information obtained from the Structural Business Survey of Enterprises 2010. Referring to the mentioned matrix, in general the activities pass from one classification to other one by one, for the other activities where the changes that the new classification brought into the sectors covered by short term statistics survey are the following:

- a. By old classification (NACE rev.1.1) the “Publication” activities (division 22) correspond to the new classification with new division 58, “Information and communication” section.
- b. Division 45, which correspond in the NACE Rev.1.1 with “Construction” activity, in the new NACE is split up in three activities, respectable: division 41 – “Construction of dwellings”, division 42 – “Civil engineering work”, division 43 – “Other specialized construction work” . Also part of this section is also group of activities related to “Real estate activities” which correspond with NACE rev.1.1 with group 70.1.
- c. The postal and courier activities, respectively in the classes 64.11 and 64.12 in NACE rev.1.1 passed to the “Transport and storage activities” division 53, in the NACE rev.2, “Post and courier activities”.
- d. Another novelty of the new classification is the pass of the “Collection and Treatment of waste” in the domain of the STST survey, which correspond partially with division 90 in the NACE rev.1.1, to the division 38 “Collection, treatment and management of waste” in NACE rev.2. Also here passed the “Recycle” activities” group 38.3, which correspond with NACE rev.1.1 with division 37, “recycle activities”.
- e. In the group 71, “Architectural and engineering activities” which correspond with NACE rev.2 with “Architectural and engineering, testing and technical analyses activities” description also are passed to the activities of testing and analyses, which correspond with group 74.3-74.8, “ Testing and technical analyses activities”.

The main indicator of the Turnover is used for the re-evaluation of the passing of the economic activities from the old to the new classification. The main methods used for the evaluation are two:

1. Micro approach method
2. Macro approach method

The first method was used in the first three years of the reclassification of the activities of the units on the individual level in the Statistical Business Register, 2010-2012.

The second method was used for the re-evaluation of the data in time series back for the period 2005-2010.

In order to reflect the changes that have taken place within the structure of economy, from the publication of the first quarter 2014 on, the base year of the Short term statistics is updated from 2005 to 2010.

The process of passing from the old to the new base consists of two steps: re-weighting, i.e. the weights used for the calculation of the indexes are updated from the base year 2005 to the base year 2010; and re-referencing, i.e., the periods of reference are updated from 2005=100 to 2010=100. In the Short term

statistics the two steps are used simultaneously. The data series are equivalent to each other; the growth rates are the same, and a series is convertible to the other.

Information on the observation

Purpose – The short term statistics shows the trend of economic development of a country in quarterly periods, by which the policy makers can develop a short term plan for the further development of the country. By this publication the development of the main indicators such as industrial production, turnover, number of employees and wages, in time series are describe.

Coverage- based on main economic activity the main activities covered in the STS survey is as following:

- Industry - composed by Mining and quarrying and Manufacturing industry (05-33)
- Electricity, gas, and steam (35)
- Water supply; sewerage, waste management and remediation activities (36)
- Construction (41, 42, 43)

As the result of applied of the new classification, NACE Rev. 2, the activities that are included in the sector of Services with relevant codes are structured as follow:

- Total sale and repair of motor vehicles (45) and Wholesale, excluding the Total sale and repair of motor vehicles (46)
- Transportation and Storage (is included and the Postal and courier activities) (49-53)
- Accommodation and Food Services, Hotels (55.1)
- Information and Communication (58, 61, 62)
- Architectural and Engineering activities (71)
- Administrative Services and ancillary activities – Travel Agencies (79)

Services composed by: Wholesale trade, Wholesale and retail sale of mote vehicle and repair of motor vehicle; Hotel; Transport and storage; Information and communication; Travel agency, other services.

Model - The enterprises are selected from the Statistical Register of Enterprises. The enterprises with 1-9 employees are surveyed by sample survey, whereas the enterprises with 10 and more employees are surveyed exhaustively.

Data collection - The data are collected directly from enterprises with face to face interview through interviewers. The questionnaire is filled from the interviewers.

Indicators – The indicators are given in Index form, the quarterly changes are given in percentage, whereas the annual changes are given in percentage with reference to the base year, actually 2010=100. The data do not present absolute values.

Indexes – The indexes show the changes in time of a given variable, or of a group of variables. The Index Volume is calculated through the Laspeyres Formula. In order to avoid the prices impact, the indices are deflated with the proper price index by activities, such as the Industry indicator are deflated

with Producer Price Index; Construction activity with Construction Cost Index; Hotel activity with Consumer Price Index, Transport with implicit price index calculated, etc.

The annual change in percentage - it measures in percentage the change of economic indicators of the actual quarter compared with the same quarter of the previous year.

The quarterly change in percentage – it measures in percentage the change of economic indicators of the actual quarter against compared with the previous quarter of the same year.

Revision – Indexes may be revised due to several reasons: additional information, the methodological changes, or re-evaluation of the used coefficients etc.

Definition of the main indicators

Turnover is the total amount realized by enterprises during the reference period from the selling of goods, selling of own products and services excluded VAT.

Number of employees – total number of paid employed in observed unit (excluding self-employed)

Employment index – shows the evolution of employment in observation unit.

Wages and salaries – are defined as the total remunerations, in cash or in kind payable to all persons counted on the payrolls, in return for work done during the accounting period.

Index of wages and salaries – the gross wages and salaries index approximates the development of the wages and salaries bill.