

Maritime Transport Statistics

First Quarter, 2024

Tirana, 29 April 2024: In Albania, there are four seaports that operate for the transport of goods which are the Port of Durrës, Vlora, Shëngjin and the port of Limjon (Saranda). The Port of Durrës is the main port in the country from which was transported 96.0 % of the volumes of freights transported by sea or 1,606 thousand tons. The total volume of freights transported from the port of Durrës increased by 3.4 % compared to the same period of the previous year.

Tab.1: Volume of freights transported by sea port 000/ton

	Q1-2021	Q2-2022	Q3 - 2023	Q4 - 2023	Q1-2023	Q2-2023	Q3-2023	Q4-2023	Q1-2024
Ports	1,426	1,540	1,686	1,597	1,619	1,713	1,688	1,739	1,673
Port of Durrës	1,359	1,473	1,619	1,526	1,553	1,608	1,618	1,641	1,606
Import	990	1,037	1,337	1,216	1,237	1,257	1,303	1,254	1,280
Export	369	436	282	310	316	351	315	387	326
Port of Vlora	22	28	27	30	19	30	37	44	38
Import	12	17	17	18	10	20	25	33	31
Export	10	11	10	12	9	10	12	11	7
Port of Saranda (Limjoni)	14	11	7	9	13	31	4	10	9
Import	6	8	4	6	8	12	4	10	9
Export	8	3	3	3	5	9	0	0	0
Port of Shëngjin	31	28	33	31	33	44	29	44	20
Import	13	12	17	19	23	36	17	32	13
Export	18	16	16	12	10	8	12	12	7

Source: Ministry of Infrastructure and Energy, calculations INSTAT

*The data of the Port of Durrës also includes the volume of goods transported from the concessionary Port of Porto Romano

The types of group- freights transported by sea, according to the NST 2007 classification (Nomenclature of Transport Statistics), for the first quarter of 2024 are presented as follows:

- The group of freights "Base metals, fabricated metal products, except machinery and equipment" accounts for 17.1 % of freights transported by sea;
- The group of freights "Coke and refined petroleum products" constitutes 14.7 % of the freights transported;

For release 29/04/2024

- The group of freights "Other non-metallic mineral products" accounts for 10.5 % of the freights transported;
- The group of freights " Coal and lignite; crude petroleum and natural gas " accounts for 7.3 % of freights transported by sea.

Tab. 2: Maritime transport of freights by NST 2007 categories

Categories of freights transported in sea ports*		Total freights in tons	
		Q1-2023	Q1-2024
Total		1,618,695	1,673,178
1	Products of agriculture, hunting and forestry; fish and other fishing products	6,686	3,388
2	Coal and lignite; crude petroleum and natural gas	185,384	121,868
3	Metal ores and other mining and quarrying products; peat; uranium and thorium ores	27,513	12,823
4	Food products, beverages and tobacco	22,009	35,252
5	Textiles and textile products; leather and leather products	841	370
6	Wood and products of wood and cork (except furniture); articles of straw and plaiting materials; pulp, paper and paper products; printed matter and recorded media	21,492	24,080
7	Coke and refined petroleum products	281,798	246,422
8	Chemicals, chemical products, and man-made fibers; rubber and plastic products; nuclear fuel	26,749	32,048
9	Other non-metallic mineral products	176,054	176,389
10	Basic metals; fabricated metal products, except machinery and equipment	211,329	286,741
11	Machinery and equipment n.e.c.; office machinery and computers; electrical machinery and apparatus n.e.c.; radio, television and communication equipment and apparatus; medical, precision and optical instruments; watches and clocks	49	2,262
12	Transport equipment	404	344
13	Furniture; other manufactured goods n.e.c.	0	0
14	Fourthary raw materials; municipal wastes and other wastes	7,121	5,471
15	Mail, parcels	0	0
16	Equipment and material utilized in the transport of goods	21,808	31,607
17	Goods moved in the course of household and office removals; baggage and articles accompanying travellers; motor vehicles being moved for repair; other non-market goods n.e.c.	0	0
18	Grouped goods: a mixture of types of goods which are transported together	7,676	8,447
19	Unidentifiable goods: goods which for any reason cannot be identified and therefore cannot be assigned to groups 01-16	621,782	685,666
20	Other goods n.e.c.	0	0

Source: Ministry of Infrastructure and Energy, calculations INSTAT

*The volume of goods transported by sea includes goods transported by ships and ferries

The number of ships entering and leaving ports of the country is recorded to be 304, of which 178 foreign ships and 126 local ships. The number of ships entering and leaving the ports was increased by 56.7 % compared to the data of the first quarter of 2023, where the number of foreign ships was increased by 4.7 %.

The sea ports where **passenger transport** is carried out in the country are: Port of Durrës, Vlora, Saranda and the port of Shëngjin. The transport of passengers for the first quarter of 2024 was carried out from the port of Durrës, Vlora and the port of Saranda.

Tab.3: Maritime passenger transport

	Q1-2022	Q2-2022	Q3-2022	Q4-2022	Q1-2023	Q2-2023	Q3-2023	Q4-2023	Q1-2024
Total Ports	121,349	222,991	825,290	197,378	138,242	280,914	988,241	197,377	135,680
Port of Durrës	101,962	121,336	445,712	133,669	109,961	129,218	461,070	127,603	109,722
Embarked	39,384	63,853	210,026	78,253	41,615	69,780	221,357	77,087	43,203
Disembarked	62,578	57,483	235,686	55,416	68,346	59,438	239,713	50,516	66,519
Port of Vlora	14,371	28,082	124,051	31,671	21,638	23,370	147,570	20,581	15,765
Embarked	6,761	14,534	57,847	18,073	9,241	12,944	70,412	12,303	6,600
Disembarked	7,610	13,548	66,204	13,598	12,397	10,426	77,158	8,278	9,165
Port of Saranda (Limjoni)	5,016	73,573	255,527	32,038	6,643	128,326	379,601	49,193	10,193
Embarked	2,416	37,075	126,166	15,820	3,299	65,277	186,302	24,440	4,875
Disembarked	2,600	36,498	129,361	16,218	3,344	63,049	193,299	24,753	5,318
Port of Shëngjin	0	0	0	0	0	0	0	0	0
Embarked	0	0	0	0	0	0	0	0	0
Disembarked	0	0	0	0	0	0	0	0	0

Source: Ministry of Infrastructure and Energy, calculations INSTAT

The number of passengers who traveled through sea ports in the country is 135,680.

The port of Durrës is the main port in the country from which 80.9 % of passengers traveled, followed by the port of Vlora with 11.6 % and the port of Saranda with 7.5 %.

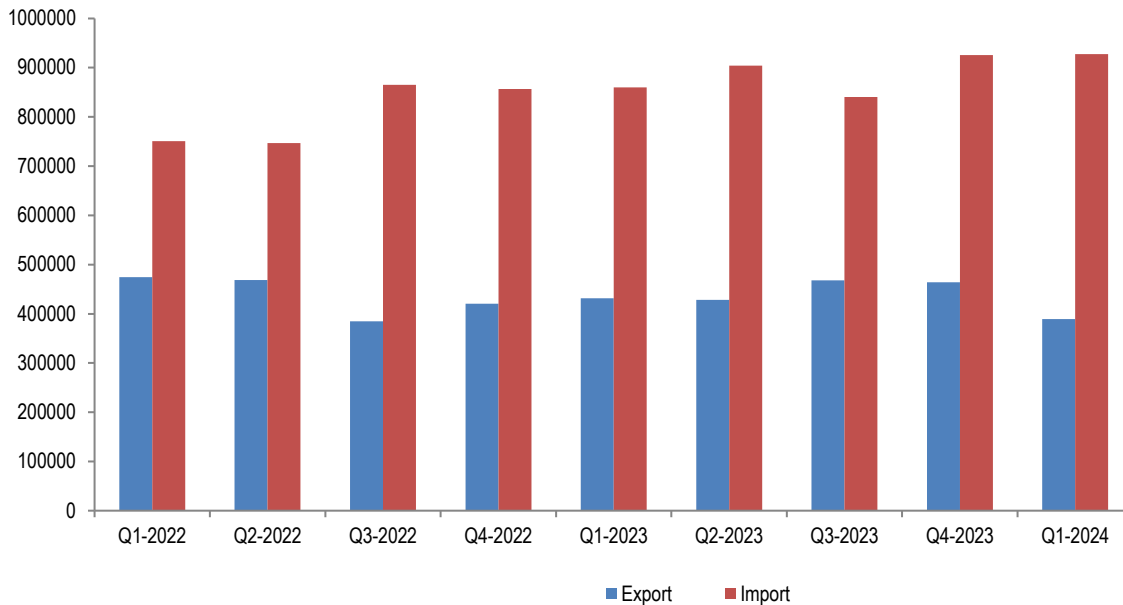
Exports/imports of freights by sea

In the first quarter of 2024, the volume of goods traded by sea (export and import) is 1,316.8 thousand/tonnes. Compared to the same period in 2023, this indicator increased by 1.9 %.

The volume of goods exported by sea in the first quarter of 2024 accounts for 40.0 % of the total volume of exported goods. The volume of goods imported by sea accounts for 64.5 % of the total volume of imported goods.

For more information, please visit the website: <https://www.instat.gov.al/en/themes/industry-trade-and-services/transport-accidents-and-characteristics-of-road-vehicles/#tab3>

Fig. 1: Exports/imports of freights by sea, tonnes



Source: General Directorate of Customs, calculations INSTAT

Methodology

The Transport Statistics publication presents the results on the transport of goods and passengers by type, as well as the export and import of goods by mode of transport, on a monthly basis. The data are administrative. The main source of information is the Ministry of Infrastructure and Energy and General Directorate of Customs.

Definitions

Transport: Movement of people and / or freights using various means of transport. Transport is carried out by rail, land, sea and air.

Maritime Transport: Any movement of freights and/or passengers using commercial vessels on travels undertaken wholly or partly by sea.

Statistical port: A statistical port consists of one or more ports, normally controlled by a single port authority, capable of recording vessel and cargo movements.

Loading Port: The port where the freights are loaded onto and transported from the vessel.

Unloading Port: The port where the freights are unloaded from the vessel after being transported by it.

International shipping: Shipping between two ports located in two different countries.

Maritime passenger: Any person who undertakes a sea voyage on a commercial vessel.

Embarked passengers: Passengers who have boarded the ship and are transported by it.

Disembarked passengers: Passengers disembarked from the ship after being transported by it.

Passenger/kilometers: Unit of measurement representing the movement of a passenger on a commercial vessel over one kilometer.

Exports: Goods destined to a fourth country, placed under customs export or outward processing arrangements or re-exported following inward processing.

Imports: Goods arrived from a fourth country and are directly placed, or are left in warehouse, under customs procedure of release for free circulation, inward processing or processing under customs control.

Nomenclature of Transport Statistics (NST 2007): A statistical nomenclature for the goods transported by four modes of transport: road, rail, inland waterways and sea (maritime).

The data of maritime transport are preliminary and subject to revision. For more refer: [Statistical revision policy](#).

Explanation of Symbols

0 - value less than half of unit of measure

- No value

(...) missing data

For more information, please visit the website: <https://www.instat.gov.al/en/themes/industry-trade-and-services/transport-accidents-and-characteristics-of-road-vehicles/#tab3>