

Maritime Transport Statistics

Fourth quarter, 2024

Tirana, 29 January 2025: In Albania, there are four seaports that operate for the transport of goods which are the Port of Durrës, Vlora, Shëngjin and the port of Limjon (Saranda). The Port of Durrës is the main port in the country from which, during the fourth quarter of 2024, was transported 94.3 % of the volumes of freights transported by sea or 1,895 thousand tons. The total volume of freights transported from the port of Durrës increased by 15.4 % compared to the same period of the previous year.

Tab.1: Volume of freights transported by sea port, 000/ton

| | Q4-2022 | Q1-2023 | Q2-2023 | Q3-2023 | Q4-2023 | Q1-2024 | Q2-2024 | Q3-2024 | Q4-2024 |
|----------------------------------|---------|---------|---------|---------|---------|---------|---------|---------|---------|
| Ports | 1,597 | 1,619 | 1,713 | 1,688 | 1,739 | 1,673 | 2,142 | 1,924 | 2,008 |
| Port of Durrës | 1,526 | 1,553 | 1,608 | 1,618 | 1,641 | 1,606 | 2,034 | 1,818 | 1,895 |
| Import | 1,217 | 1,237 | 1,257 | 1,303 | 1,254 | 1,280 | 1,634 | 1,490 | 1,605 |
| Export | 310 | 316 | 350 | 315 | 387 | 327 | 400 | 328 | 290 |
| Port of Vlora | 30 | 19 | 30 | 37 | 44 | 38 | 45 | 51 | 45 |
| Import | 18 | 10 | 20 | 26 | 33 | 31 | 35 | 37 | 34 |
| Export | 12 | 9 | 10 | 12 | 11 | 7 | 10 | 14 | 11 |
| Port of Saranda (Limjoni) | 9 | 13 | 31 | 4 | 10 | 9 | 10 | - | 15 |
| Import | 6 | 8 | 12 | 4 | 10 | 9 | 10 | - | 12 |
| Export | 3 | 5 | 19 | - | - | - | - | - | 3 |
| Port of Shëngjin | 31 | 33 | 44 | 29 | 44 | 20 | 54 | 55 | 53 |
| Import | 19 | 23 | 36 | 17 | 32 | 13 | 35 | 37 | 37 |
| Export | 12 | 10 | 8 | 12 | 12 | 7 | 19 | 18 | 16 |

Source: Ministry of Infrastructure and Energy, calculations INSTAT

* The data of the Port of Durrës also includes the volume of goods transported from the concessionary Port of Porto Romano

The types of group- freights transported by sea, according to the NST 2007 classification (Nomenclature of Transport Statistics), for the fourth quarter of 2024 are presented as follows:

- The group of freights "Coke and refined petroleum products" accounts for 20.5 % of freights transported by sea;
- The group of freights "Base metals, fabricated metal products, except machinery and equipment" accounts for 17.0 % of the freights transported;
- The group of freights "Other non-metallic mineral products" constitutes 12.6 % of the freights transported;

- The group of freights " Coal and lignite; crude petroleum and natural gas " accounts for 5.8 % of freights transported by sea.

Tab. 2: Maritime transport of freights by NST 2007 categories

| Categories of goods transported in sea ports | | Total goods in tons | |
|--|--|---------------------|------------------|
| | | Q 4-2023 | Q 4-2024 |
| | Total | 1,739,437 | 2,008,367 |
| 1 | Products of agriculture, hunting and forestry; fish and other fishing products | 8,644 | 22,977 |
| 2 | Coal and lignite; crude petroleum and natural gas | 154,034 | 116,230 |
| 3 | Metal ores and other mining and quarrying products; peat; uranium and thorium ores | 13,313 | 18,713 |
| 4 | Food products, beverages and tobacco | 40,048 | 42,099 |
| 5 | Textiles and textile products; leather and leather products | 728 | 763 |
| 6 | Wood and products of wood and cork (except furniture); articles of straw and plaiting materials; pulp, paper and paper products; printed matter and recorded media | 25,654 | 20,875 |
| 7 | Coke and refined petroleum products | 220,927 | 411,237 |
| 8 | Chemicals, chemical products, and man-made fibers; rubber and plastic products; nuclear fuel | 9,430 | 40,128 |
| 9 | Other non-metallic mineral products | 194,129 | 253,237 |
| 10 | Basic metals; fabricated metal products, except machinery and equipment | 246,436 | 340,732 |
| 11 | Machinery and equipment n.e.c.; office machinery and computers; electrical machinery and apparatus n.e.c.; radio, television and communication equipment and apparatus; medical, precision and optical instruments; watches and clocks | 3,722 | 87 |
| 12 | Transport equipment | 825 | 7,454 |
| 13 | Furniture; other manufactured goods n.e.c. | 0 | 0 |
| 14 | Secondary raw materials; municipal wastes and other wastes | 9,179 | 5,317 |
| 15 | Mail, parcels | 0 | 0 |
| 16 | Equipment and material utilized in the transport of goods | 34,971 | 34,557 |
| 17 | Goods moved in the course of household and office removals; baggage and articles accompanying travellers; motor vehicles being moved for repair; other non-market goods n.e.c. | 0 | 0 |
| 18 | Grouped goods: a mixture of types of goods which are transported together | 10,503 | 11,589 |
| 19 | Unidentifiable goods: goods which for any reason cannot be identified and therefore cannot be assigned to groups 01-16 | 766,894 | 682,372 |
| 20 | Other goods n.e.c. | 0 | 0 |

Source: Ministry of Infrastructure and Energy, calculations INSTAT

*The volume of goods transported by sea includes goods transported by ships and ferries

The number of ships entering and leaving ports of the country is recorded to be 266, of which 235 foreign ships and 31 local ships. The number of ships entering and leaving the ports was increased by 28.5 % compared to the data of the fourth quarter of 2023, where the number of foreign ships was increased by 39.9%.

For more information, please visit the website: <https://www.instat.gov.al/en/themes/industry-trade-and-services/transport-accidents-and-characteristics-of-road-vehicles/#tab3>

The sea ports where passenger transport is carried out in the country are: Port of Durrës, Vlora, Saranda and the port of Shëngjin. The transport of passengers for the fourth quarter of 2024 was carried out from the port of Durrës, Vlora and the port of Saranda.

Tab.3: Maritime passenger transport

| | Q4-2022 | Q1-2023 | Q2-2023 | Q3-2023 | Q4-2023 | Q1-2024 | Q2-2024 | Q3-2024 | Q4-2024 |
|----------------------------------|----------------|----------------|----------------|----------------|----------------|----------------|----------------|----------------|----------------|
| Total Ports | 197,378 | 138,242 | 280,914 | 988,241 | 197,377 | 135,680 | 298,175 | 950,100 | 211,371 |
| Port of Durrës | 133,669 | 109,961 | 129,218 | 461,070 | 127,603 | 109,722 | 117,200 | 417,670 | 130,324 |
| Embarked | 78,253 | 41,615 | 69,780 | 221,357 | 77,087 | 43,203 | 62,561 | 197,440 | 76,846 |
| Disembarked | 55,416 | 68,346 | 59,438 | 239,713 | 50,516 | 66,519 | 54,639 | 220,230 | 53,478 |
| Port of Vlora | 31,671 | 21,638 | 23,370 | 147,570 | 20,581 | 15,765 | 25,355 | 140,363 | 19,483 |
| Embarked | 18,073 | 9,241 | 12,944 | 70,412 | 12,303 | 6,600 | 13,444 | 67,543 | 12,259 |
| Disembarked | 13,598 | 12,397 | 10,426 | 77,158 | 8,278 | 9,165 | 11,911 | 72,820 | 7,224 |
| Port of Saranda (Limjoni) | 32,038 | 6,643 | 128,326 | 379,601 | 49,193 | 10,193 | 155,620 | 392,067 | 61,564 |
| Embarked | 15,820 | 3,299 | 65,277 | 186,302 | 24,440 | 4,875 | 77,741 | 191,958 | 30,794 |
| Disembarked | 16,218 | 3,344 | 63,049 | 193,299 | 24,753 | 5,318 | 77,879 | 200,109 | 30,770 |
| Port of Shëngjin | 0 | 0 | 0 | 0 | 0 | 0 | 0 | 0 | 0 |
| Embarked | 0 | 0 | 0 | 0 | 0 | 0 | 0 | 0 | 0 |
| Disembarked | 0 | 0 | 0 | 0 | 0 | 0 | 0 | 0 | 0 |

Source: Ministry of Infrastructure and Energy, calculations INSTAT

The number of passengers who traveled through sea ports in the country is 211,371 persons.

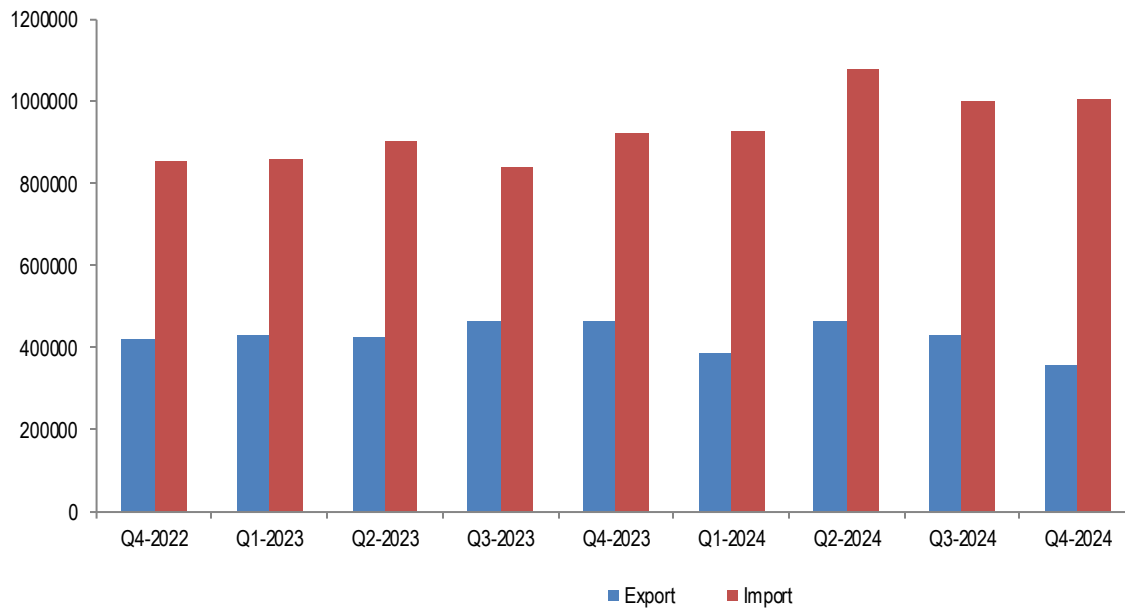
From the port of Durrës have traveled 61.7 % of passengers, followed by the port of Saranda with 29.1% and the port of Vlora with 9.2 %.

Exports/imports of freights by sea

In the fourth quarter of 2024, the volume of goods traded by sea (export and import) is 1,369 thousand/tonnes. Compared to the same period in 2023, this indicator decreasing by 1.5 %.

The volume of goods exported by sea in the fourth quarter of 2024 accounts for 37.2 % of the total volume of exported goods. The volume of goods imported by sea accounts for 64.4 % of the total volume of imported goods.

Fig. 1: Exports/imports of freights by sea, tonnes



Source: General Directorate of Customs, calculations INSTAT

Methodology

The Transport Statistics publication presents the results on the transport of goods and passengers by type, as well as the export and import of goods by mode of transport, on a monthly basis. The data are administrative. The main source of information is the Ministry of Infrastructure and Energy and General Directorate of Customs.

Definitions

Transport: Movement of people and / or freights using various means of transport. Transport is carried out by rail, land, sea and air.

Maritime Transport: Any movement of freights and/or passengers using commercial vessels on travels undertaken wholly or partly by sea.

Statistical port: A statistical port consists of one or more ports, normally controlled by a single port authority, capable of recording vessel and cargo movements.

Loading Port: The port where the freights are loaded onto and transported from the vessel.

Unloading Port: The port where the freights are unloaded from the vessel after being transported by it.

International shipping: Shipping between two ports located in two different countries.

Maritime passenger: Any person who undertakes a sea voyage on a commercial vessel.

Embarked passengers: Passengers who have boarded the ship and are transported by it.

Disembarked passengers: Passengers disembarked from the ship after being transported by it.

Passenger/kilometers: Unit of measurement representing the movement of a passenger on a commercial vessel over one kilometer.

Exports: Goods destined to a fourth country, placed under customs export or outward processing arrangements or re-exported following inward processing.

Imports: Goods arrived from a fourth country and are directly placed, or are left in warehouse, under customs procedure of release for free circulation, inward processing or processing under customs control.

Nomenclature of Transport Statistics (NST 2007): A statistical nomenclature for the goods transported by four modes of transport: road, rail, inland waterways and sea (maritime).

The data of maritime transport are preliminary and subject to revision. For more refer: [Statistical revision policy](#).

Explanation of Symbols

0 - value less than half of unit of measure

- No value

(...) missing data

For more information, please visit the website: <https://www.instat.gov.al/en/themes/industry-trade-and-services/transport-accidents-and-characteristics-of-road-vehicles/#tab3>